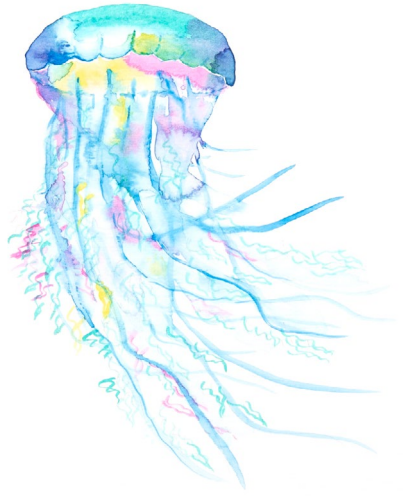


WATERCOLOUR JELLYFISH

EASY

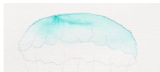


WHAT YOU'LL NEED:

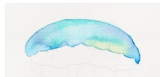
- Downloadable artwork template
- 1 Sheet of watercolour paper from Canson Watercolour Pad A4
- 1 x container for clean water
- Watercolour paint palette (an ice cube tray is ideal)
- 1 x HB Pencil
- Derivan Artists Watercolour Paint - Magenta, Phthalo Blue, Phthalo Green, Cadmium Yellow Hue and Purple
- Round brushes in sizes No.2, No.4 and No.6. from Princeton SupaValue Synthetic Brushes

STEP 1: Using the template and HB pencil, trace the jellyfish design onto the watercolour paper. Alternatively, you can also photocopy or scan/print the design onto the paper if preferred. Place small amounts of the watercolour paint into separate compartments in the palette. Mix with water.

STEP 2: Using the No. 6 Brush and clean water, wet the dome area of the jellyfish head. Then dip the No.2 brush into the Phthalo Green and follow the arch on the tip of the dome. The colour will bleed into the surrounding wet areas.



STEP 3: Rinse the No. 2 brush and then dip it into the Phthalo Blue and follow the lines on the edge of the dome. Rinse the same brush again and dip it into the Cadmium Yellow Hue and touch the front lip of the dome in a few places. Following the same steps, place some Purple near the corners of the dome.



STEP 4: While waiting for the dome to dry, paint in random squiggly tentacles using the No.2 brush and with Phthalo Green, Magenta and Cadmium Yellow.



STEP 5: Now to work on the underside of the dome. Use the No.4 brush to wet the inside of the dome with clean water, then switch to the No.2 brush. Dip it into the Magenta and touch on the two lower right and left sides, before following half the upper inside line. Rinse the brush and use Cadmium Yellow to follow the remaining line. While the lower dome is still wet, clean the brush again before using the No.4 brush dipped in Phthalo Blue to paint the long tentacles.



STEP 6: Wait for the work in the previous step to be half dried, then use the No.8 brush dipped in water to wet the central part of the tentacles. This will cause the colours to bleed and flow. Add additional drips of Magenta, Cadmium Yellow or Phthalo Blue to add soft colour depth to the area. If the tentacles have bled to the point where they are no longer visible, wait for the artwork the half dry before repainting the tentacles using the No.1 brush. Allow to dry before signing and framing if desired.

TIP

- To trace the design onto watercolour paper place the template image at the back of the watercolour paper, then press it lightly against a window and trace the image that shows through using the HB pencil.



Drifting Jellyfish Project by Pauline Roods

Derivan Pty Ltd

ABN 36 003 273 925

Unit 4/23 Leeds St. Rhodes NSW 2138

T: 02 9736 2022 F: 02 9736 3637

derivan@derivan.com.au

The information on this project sheet is presented in good faith, but no warranty is given, nor results guaranteed. Quantities and selections may vary at each store.
Copyright Spotlight 2016.

SPOTLIGHT