

**SPOTLIGHT**

# PEBEO PAINTED CANDLE LID

Nº 14.24.05  
PROJECT SHEET



*It's what you make it.*

**SHOW US WHAT  
YOU'RE MAKING**

 /spotlightstores

 @spotlightstores

# PEBEO CANDLE LID PROJECT

**e** EASY

## WHAT YOU'LL NEED

- Candle in a jar with a cork or wooden lid
- Pencil
- Carbon Paper and prior drawn design template (optional)
- Fine brushes
- Jasart Byron White Gesso
- Pebeo Studio Acrylic Colours:
  - Titanium White
  - Cerulean Blue
  - Naples Yellow Hue
  - Chrome Green Hue
  - Phtalocynine Emerald
  - Hookers Green
  - Opaque Sap Green
  - Iridescent Orange Yellow (DYNA)
  - Iridescent Green Blue (DYNA)

## INSTRUCTIONS

**Step 1** - Prime surface and side edging of lid with white gesso applied using a brush. Allow to dry between coats and apply at least 2 coats to the top surface (one horizontally, one vertically).

**Step 2** - Lightly draw design outline on dried surface using a pencil. If preferred, the design can be drawn on a separate piece of paper prior, (or use pre-existing template), then transferred to gessoed surface using carbon paper (place black side down to surface with drawn template lined up over the top to match edges of the candle lid and traced over using a pencil).

**Step 3** - Mix Pebeo acrylic colours: Cerulean Blue and Titanium White. Use this mix to fill in sky area.

**Step 4** - Paint Naples Yellow Hue in relevant areas as shown.



**Step 5** - Paint Chrome Green Hue in relevant area of foreground, mountains and tree.



**Step 6** - Apply a darker mix of Cerulean Blue and Titanium White to relevant area at adjoining base of mountains.



**Step 7** - Paint a strip of Phthalocyanine Emerald on right-hand side of left-positioned mountain as shown.



**Step 8** - Mix Phthalocyanine Emerald with Titanium White. Use mix to paint in areas shown in foreground and backing the tree (as pictured).



**Step 9** - Add Neutral Grey to the mix made in Step 8 to create a darker turquoise and apply to mountain and foreground areas as pictured.





**Step 10** - Mix acrylic colours: Phthalocyanine Emerald and Hookers Green. Apply mix to mountain, tree line and foreground areas as shown, with some Hookers Green on its own layered in for contrast.



**Step 12** - Mix Titanium White and Iridescent Orange Yellow (DYNA). Apply mix to outline areas of Naples Yellow Hue on mountains as pictured and also dotted in foreground as shown.

In addition, apply Iridescent Orange Yellow (DYNA) on its own to provide darker contrast dottings amidst the mixed White and Dyna colour dots in foreground (as shown).



**Step 11** - Paint in Opaque Sap Green in areas of mountain, tree line and foreground as pictured.



**Step 13** - Scatter in some flecks of Opaque Sap Green amongst the dots applied in step 11, as pictured.

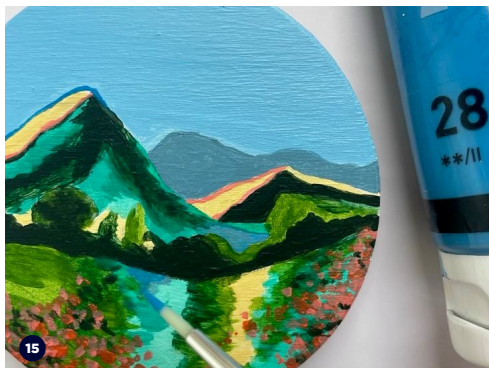


**Step 14** - Mix colours: Cerulean Blue, Titanium White and Neutral Grey. Apply mix to back mountains as shown and a little to base of tree line in light turquoise area as pictured.



**Step 15** - Apply Cerulean Blue in a thin line tracing the left hand side of the mountain where it meets the sky (as pictured). May also blend some in to area of tree line base that was added to in step 13 (as shown in picture).

Tip: As any second coats are applied, add any additional contrasting/ blending as desired using colours/mixes already used.



### Step 16:

Once dry, carefully paint Iridescent Green Blue (DYNA) around the side edge of the lid. A little can also be added to areas of turquoise on painted picture as desired to provide further contrasting. Once the side edge is dry, apply a second coat to achieve good coverage.



### Candle Lid Template:



### Completed Candle Lid:

