

**SPOTLIGHT**

# ORGANIC WOOL ARGYLE JUMPER

N° 17.20.21  
PROJECT SHEET



*It's what you make it.*

**SHOW US WHAT  
YOU'RE MAKING**

 [/spotlightstores](#)

 [@spotlightstores](#)

# ORGANIC WOOL ARGYLE JUMPER

## i INTERMEDIATE

### WHAT YOU'LL NEED

- 'Keep Sake' 100% Organic Wool 50g x 12 (13-14-15) balls Main Colour (M-cream); 2 balls 1st Contrast (C1-light brown for diamond); 1 ball 2nd Contrast (C2-dark brown for embroidery).
- 1 pair each 4mm and 3.50mm knitting needles or sizes required to give correct tension.
- 2 stitch-holders
- Scissors, yarn needle, tape measure

Measurements					
SIZES		S	M	L	XL
To Fit Bust	cm	80-85	90-95	100-105	110-115
Actual Size <i>(approx)</i>	cm	102	110	121	139
Length	cm	58	59	60	61
Sleeve Length	cm	43			

### TENSION

23 sts and 30 rows to 10cm over stocking st, using 4mm needles.

### INSTRUCTIONS

#### BACK

Using 4mm needles and M, cast on 119 (129-141-151) sts.

**Beg Rib - 1st row** (RS) - K2, \* P1, K1, rep from \* to last st, K1.

**2nd row** - K1, \* P1, K1, rep from \* to end.

Rep 1st and 2nd rows until work measures 6cm from beg, ending with a 2nd row. \*\*

Work 96 rows stocking st.

Tie a coloured thread at each end of last row to mark beg of armholes as there is no armhole shaping.

Work a further 58 (62-64-68) rows stocking

st.

**Shape Shoulders** - Cast off 10 (11-12-13) sts at beg of next 8 rows.

Leave rem 39 (41-45-47) sts on a stitch-holder.

#### FRONT

Work as for Back to \*\*.

Work 12 (14-14-16) rows stocking st.

**Note** - When changing colours in the middle of a row, twist the colour to be used (on WS) underneath and to the right of the colour just used. Use a separate ball of yarn for each section of colour.

**Beg Graph - 1st row** - K16 (21-27-32) M, knit across next 87 sts from graph (noting C2 marked with X is embroidered on later and to knit this st in background colour), K16 (21-27-32) M.

**2nd row** - P16 (21-27-32) M, purl across next 87 sts from graph, P16 (21-27-32) M.

Cont in stocking st and work rows 3 to 114 incl from graph across centre 87 sts.

Using M for rem, work 12 (12-14-14) rows stocking st.

**Shape Neck - Next row** (RS) - K49 (54-60-65), turn.

\*\*\* Cont on these 49 (54-60-65) sts and dec one st at neck edge in every row until 43 (48-50-55) sts rem, then in every foll alt row until 40 (44-48-52) sts rem.

Work 3 rows without shaping.

**Shape Shoulder** - Cast off 10 (11-12-13) sts at beg of next row, then in every foll alt row twice. Work 1 row. Cast off rem 10 (11-12-13) sts. \*\*\*

Slip next 21 sts onto stitch-holder and leave. With RS facing, join M to rem sts and knit to end.

Rep from \*\*\* to \*\*\*, working 1 row more before shoulder shaping.

## SLEEVES

Using 3.50mm needles and M, cast on 43 (45-47-49) sts.

**Beg Rib** – Work in rib as for lower band of Back until work measures 6cm from beg, ending with a 2nd row.

Change to 4mm needles.

Work 4 rows stocking st.

**Next row** – K2, inc in next st, knit to last 3 sts, inc in next st, K2.

Cont inc one st (as before) in every foll 4th (4th-alt-alt) row until there are 81 (89-51-61) sts, then in every foll 6th (6th-4th-4th) row until there are 87 (91-95-101) sts.

Cont without shaping until work measures 43cm from beg, ending with a purl row.

Cast off loosely.

## NECKBAND

Using mattress st, join right shoulder seam.

With RS facing, using 3.50mm needles and M, knit up 18 (20-22-24) sts evenly along left side of neck, knit across sts from front stitch-holder, knit up 18 (20-22-4) sts evenly along right side of neck, then knit across sts from back stitch-holder – dec one st in centre ... 95 (101-109-115) sts.

Work in rib as for lower band of Back (beg with a 2nd row) until neckband measures 3cm, ending with a 2nd row.

Cast off loosely in rib.

## FINISHING

DO NOT PRESS. Join left shoulder and neckband seam.

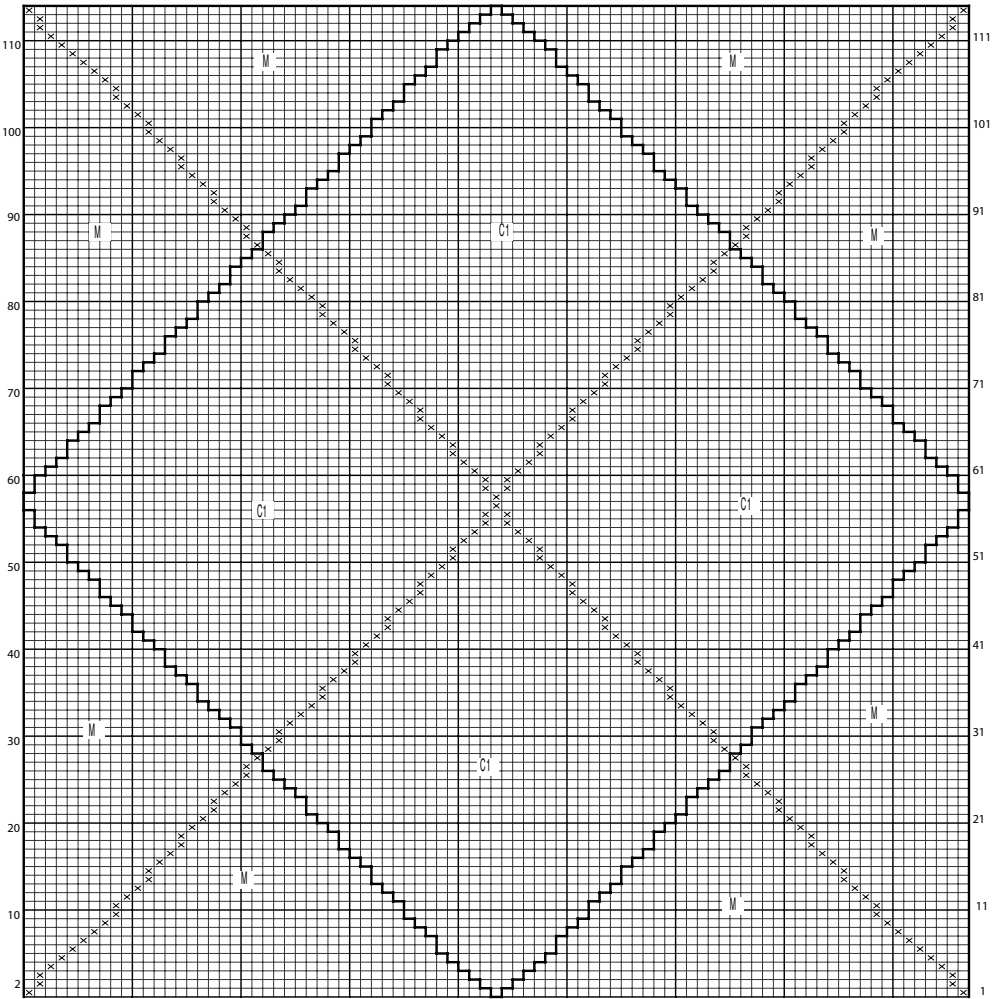
**Embroidery** – Using C2, work knitting st embroidery marked by X on graph to diamond motif, then continue C2 to outer edges of Front of Jumper (as pictured).

Tie a coloured thread on each side of Front at same position as Back to mark armholes.

Sew in sleeves evenly between coloured threads, placing centre of sleeves to

shoulder seams. Join side and sleeve seams.

# DIAGRAM



The information on this project sheet is presented in good faith, but no warranty is given, nor results guaranteed. Quantities and selections may vary at each store. Copyright Spotlight 2020.

**SPOTLIGHT**