

**SPOTLIGHT**

**MEGA  
TWEED  
CHUNKY  
CARDI**

N° 16.20.11  
PROJECT SHEET



*It's what you make it.*

**SHOW US WHAT  
YOU'RE MAKING**

 /spotlightstores

 @spotlightstores

# MEGA TWEED CHUNKY CARDI

**i** INTERMEDIATE

## WHAT YOU'LL NEED

- Mega Tweed 170g x 8, 9, 10, 11 balls
- 1 pair of 12.75mm knitting needles and a circular 12.75mm knitting needle 80cm long or size required to give correct tension.
- 1 stitch-holder, scissors, yarn needle, tape measure

## MEASUREMENTS

SIZE		S	M	L	XL
Fits Bust	cm	75-80	85-90	95-100	105-110
Actual Size	cm	110	120	130	140
Sleeve Length	cm	44	45	46	47
Length	cm	68	69	70	71

## TENSION

6 sts x 9 rows to 10cm over stocking st, using 12.75mm needles.

## INSTRUCTIONS

### BACK

Using 12.75mm needles, cast on 46 (50-54-58) sts.

**1st row** (RS) – K2, \* P2, K2, rep from \* to end.

**2nd row** – P2, \* K2, P2, rep from \* to end.

Last 2 rows form rib.

Rep last 2 rows 7 times.

### Beg Pattern for Back –

Work row 1 to 16 incl from Graph.

Rows 1 to 16 incl form patt.

Cont in pattern until work measures 47cm from beg, working last row on wrong side.

Tie a marker at each end of last row to mark armholes, as there is no armhole shaping.

Work a further 20 (20-22-22) rows pattern.

## Shape Shoulders

Cast off 7 (8-9-9) sts at beg of next 2 rows, then 7 (7-8-9) sts at beg of foll 2 rows.

Leave rem 18 (20-20-22) sts on stitch-holder for neckband.

## LEFT FRONT

Using 12.75mm needles, cast on 22 (22-26-26) sts.

Work 16 rows rib as given for back, inc 0 (2-0-2) sts evenly across last row ... 22 (24-26-28) sts.

Working in stocking st for rem, cont until work measures same as back to markers, working last row on wrong side. \*\*

Tie a marker at beg of next row.

Work 2 rows stocking st.

### Beg front slope shaping –

Dec one st at end (front edge) of next and foll alt rows until 15 (15-18-18) sts rem, Sizes S and L Only – then in foll 4th row once.

**All Sizes** – ... 14 (15-17-18) sts.

Purl one row.

### Shape Shoulder

Cast off 7 (8-9-9) sts, knit to end.

Purl 1 row.

Cast off rem 7 (7-8-9) sts.

## RIGHT FRONT

Work as given for Left Front to \*\*.

Tie a marker at end of next row.

Work 2 rows stocking st.

### Beg front slope shaping –

Dec one st at beg (front edge) of next and foll alt rows until 15 (15-18-18) sts rem, Sizes S and L Only – then in foll 4th row once.

**All Sizes** – ... 14 (15-17-18) sts.

Work 2 rows.

### Shape Shoulder

Cast off 7 (8-9-9) sts, purl to end.

Knit 1 row.

Cast off rem 7 (7-8-9) sts.

## **SLEEVES**

Using 12.75mm needles, cast on 14 (14-18-18) sts.

Work 8 rows rib as given for back.

Working in stocking st for rem, inc one st at each end of next row, then in every foll 4th row until there are 18 (22-22-24) sts, then in every foll 6th row until there are 24 (26-28-30) sts.

Cont without further inc until work measures 44 (45-46-47) cm from beg, working last row on wrong side.

### **Shape Top**

Cast off 5 (5-5-6) sts at beg of next 2 rows, then 4 (5-5-5) sts at beg of foll 2 rows.

Cast off rem 6 (6-8-8) sts.

## **FRONTBAND (WORKED IN ONE)**

DO NOT PRESS. Using mattress stitch join shoulder seams. With RS facing, using a 12.75mm circular needle, beg at right front edge, knit up 30 sts evenly along right front edge to beg of neck shaping, knit up 12 (13-13-14) sts evenly along right front neck shaping to shoulder seam, knit across 18 (20-20-22) sts from back neck stitch holder, knit up 12 (13-13-14) sts evenly along left front neck shaping, then knit up 30 sts along left front edge to end ... 102 (106-106-110) sts.

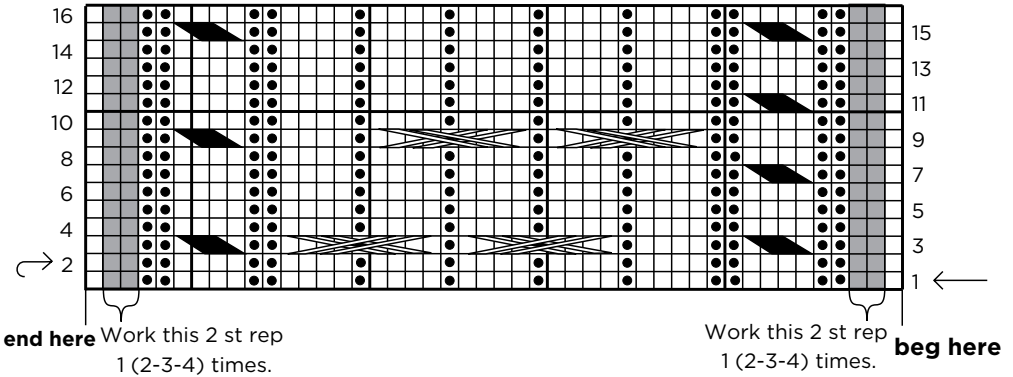
Work 8 rows rib as given for back, beg with a 2nd row.

Cast off loosely in rib.

## **FINISHING**

Sew in sleeves evenly between markers. Join side and sleeve seams. Sew in ends.


## GRAPH FOR BACK





**Key** - Shaded area represents st repeat.

□ = Knit st on odd numbered rows (right side), purl st on even numbered rows (wrong side).

◼ = Purl st on odd rows (right side), knit st on even numbered rows (wrong side).

 = 'C4F' - Slip next 2 sts onto cable needle and leave at front of work, K2, then K2 from cable needle.

 = 'C9F' - Slip next 5 sts onto cable needle and leave at front of work, K4, then slip the purl st from cable needle back onto left hand needle and purl it, then K4 from cable needle.

 = 'C9B' - Slip next 5 sts onto cable needle and leave at front of work, K4, then slip the purl st from cable needle back onto left hand needle and purl it, then

**Note** - This Graph is worked in rounds, so all rows are right side.