

SPOTLIGHT

MARVEL 8 PLY CROCHET PARROT WINGS & MASK

N° 03.23.11
PROJECT SHEET



It's what you make it.

**SHOW US WHAT
YOU'RE MAKING**

 /spotlightstores

 @spotlightstores

MARVEL 8 PLY CROCHET PARROT WINGS & MASK

i INTERMEDIATE

- '4 Seasons' Marvel 8 ply 100g, 2 balls each x 3 colours, (col1, col2, col3)
- 6.00mm crochet hook (wings)
- 4.00mm crochet hook (ties)
- Scissors
- Yarn needle
- Tape measure

Finished Size (approx.):

- 92cms wingspan x 60cms long

Abbreviations

ch = chain; ch-sp = chain-space; tr = treble crochet; dc = double crochet; lp/s = loop/s; RS = right side; WS = wrong side; sk = skip; sl st = slip stitch; st/ = stitch/es.

Wings

Notes: Worked with 2 stands of yarn held together, and first row is common for both wings. Rows are worked in a rotation of Col1, 2 and 3 for 1 row each for the first 27 rows, refer to the diagram to work in multiple rows of each colour for the remaining 16 rows.

Start with Col 1, then at the end of the row, change the colour on the last draw through on the last stitch. This avoids the colour entering the next row.

The 5tr Stitch is also known as a shell.

Foundation Ch: Using Col 1 and 6.00mm hook, Ch109.

Row 1(RS): 1ch, 1dc in 2nd ch from hook, (sk 2 ch, 5tr in next st, sk 2 ch, 1dc in next ch) repeat to the end of the chain. (18 shells and 19 dc in all).

Wings are now worked in 2 parts starting with the right wing.

RIGHT WING

Row 2(WS): (Col 2) 3ch(counts as 1st tr), 2tr in 1stdc, (sk 2 sts, 1dc in next st, sk 2 sts, 5tr in next st), repeat until 8 shells are complete, sk 2 sts, 1dc in next st, sk 2 sts, 3tr in last sts. (8 complete shell, 2 half shells, and 9dc).

Row 3: (Col 3) 1ch, 1dc in 1st tr, (sk 2 sts, 5tr in next st, sk 2sts, 1 dc in next st) repeat to end. (9 shells and 10 dc) - 2 row pattern is now established)

Row 4: (Col 1) Pattern As Row 2.

Row 5: (Col 2) Pattern As Row 3.

Commence Shaping - worked over 2 rows to reduce width by a half shell.

Row 6(dec row): (Col 3) 3ch(counts as first tr), 1tr in same st, sk 2 sts, 1 dc in next st, sk 2 sts, 5tr in next st continue in main pattern to the end.

Row 7(dec row): (Col 1) Pattern until second last dc is worked, sk 2 sts, 4tr in next st, dc in last st, Bind off.

Row 8: (Col 2) Using next colour draw up a loop in the 3rd st, 1ch, 1dc in same st, continue in main pattern to end.

Work 4 keeping pattern and colour change correct.

Row 13(dec row): (Col 1) Work in pattern until last dc is worked, 2 tr only in last st.

Row 14(dec row): (Col 2) 1ch, 1dc in same st, sk 1 st, 4 tr in next st, work in pattern to end.

LEFT WING

Row 2: With wrong side facing, draw up a loop with colour 2, in the last stitch of Row 2 of the right wing. Ch 3, 2tr in same st. Work in pattern to end.

Start to shape the left edge, starting with the shaping as in Row 13-15 of the right wing to decrease by half a shell.

Continue working in pattern with colour changes as per diagram, in reverse until 43 rows with shaping have been worked to mirror the right wing.

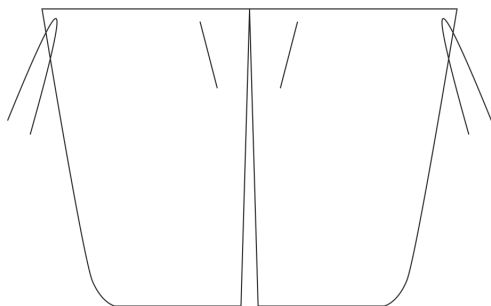
FINISHING

Ties – Make 6 (using 2 strands)

Using 4.00mm hook, Make 45 ch bind off.

Attached 2 ties to the outside edge as wrist ties, and 1 tie on on both ends, either side of the middle section to suit the shoulders.

These ties will not be flat, shape to come out and around the upper arms.



Weave in all loose ends.

CROCHET PARROT MASK

WHAT YOU'LL NEED:

- '4 Seasons' marvel 8 ply 100 g, 1 ball each x 3 colours, (col1,col2, col3) If making the wings there is enough yarn left over to make the mask

- 4.00mm crochet hook

- Scissors

- Yarn needle

- Tape measure

Finished size (approx.):

25cms total width x 15cms high

Abbreviations

ch = chain; **ch-sp** = chain-space; **tr** = treble crochet; **dc** = double crochet; **htr** = half treble crochet; **lp/s** = loop/s; **RS** = right side; **WS** = wrong side; **sk** = skip; **sl st** = slip stitch; **st/** = stitch/es.

INSTRUCTIONS:

Eye make 4 – Col 2

Foundation Ch: Ch30, sl st in first ch ensuring work not twisted.

Rnd 1(RS): 1ch, 2dc in same st as sl st, 1dc in each ch to end, 1dc in same dc as last dc. Sl st in first sts of round. (32 dc).

Rnd 2: 1ch, 2dc in same st as sl st, 1dc in next 5 sts, 1htr in next 5 sts, 1tr in next 4 sts, 2tr in next 2 sts, 1 tr in next 4sts, 1 htr in next 5 sts, 1 dc in next 5 sts, 2 dc in last st. 1ch, st st in first ch of the rnd. (36 sts).

Rnd 3: 1ch, 2dc in same st as sl st, 1dc in next 5 sts, 1htr in next 11 sts, 2htr in next st, 3tr in next st, 2htr in next st. 1 htr in next 10sts, 1dc in next 5 sts, 2 dc in last st. 1ch, st st in first ch of the rnd. (42 sts).

Beak – Col 3

Foundation Ch: Ch15.

Rnd 1(RS): 3ch(counts as first tr), 2tr in 4th ch from hook, 1tr in next 4 ch, 1htr in next 5 ch, 1dc in next 4 ch. (2dc, 1ch, 2dc) in last ch, working on the other side of the ch, 1dc in next 4 ch, 1htr in next 5 ch, 1 tr in next 4 ch, 3tr in last ch. Sl st in the top of the 3ch tr. (37sts).

Rnd 2: 3ch(counts as first tr), 1tr same st as sl st, 2 tr in next st, 1tr in next 6 sts, 1htr in next 7 sts, 1dc in next 2 sts, 2dc in next st, (1ch, 1tr, 1ch) in ch-sp, 2 dc in the next st, 1dc in next 2 sts, 1 htr in next 7 sts, 1 tr in next 6 sts, 2tr in last 2 ts, Sl st in the top of the 3ch tr. (45 sts).

Triangle – Col 1

Make 4 ch, 2 tr in first ch turn. (3 sts).

2 tr in each tr. (6 sts) Bind off.

Finishing

Sew 2 eyes together, to make thicker and more stable, matching all edges.

Sewing the 2 eyes together 2.5 cms, starting from the bind off working upwards to shape the eyes on an angle.

Sew the feature triangle centred over the 2.5 cms join to further support the mask.

Sew the beak in place behind the eyes.

SHELL DETAIL ON EYES.

Row 1: Using Col 2, draw up a loop on the outer corner of the left eye. 3ch, 4 tr in same st. Sk 2 sts, 1 dc in next st, sk 2 sts, 5 tr in next st, sk 2 sts, 1 dc in next st. Bind off.

Row 2: Using colour 1, draw up a loop at the top of the ch 3 of row 1. 3ch, 4 tr in same st. Sk 2 sts, 1 dc in next st, sk 2 sts, 5 tr in next st, sk 2 sts, 1 dc in next st. Bind off.

Repeat on the right eye in reverse, counting back 10 sts, to start with 1ch, 1dc for the shell pattern.

Ties – Make 2 (using 2 strands)

Using Col 1, Make 45 ch bind off.

Attached 2 ties in the middle row on either side of each eye opening.

Weave in all loose ends