

**SPOTLIGHT**

# JASART BYRON & REEVES EASTER BUNNY BAG

N° 14.24.04  
PROJECT SHEET



*It's what you make it.*

**SHOW US WHAT  
YOU'RE MAKING**

 /spotlightstores

 @spotlightstores

# JASART & REEVES EASTER BUNNY BAG

**i** BEGINNER

## WHAT YOU'LL NEED

- Pencil
- Carbon Paper and prior drawn design template (optional)
- Fine brushes
- Small drawstring Tote bag (for best results, wash, dry and iron your tote before commencing the project)
- Plastic sheet insert to fit into Tote bag (Reeves disposable palette works well for this)
- Mixing Palette
- Jasart Byron Fabric Medium
- Jasart Byron Acrylic Colours: Red Oxide, White, Cool Blue, Violet & Warm Yellow
- Reeves Acrylic Colours: Copper, Payne's Grey, Bronze, Pale Lemon, Deep Yellow, Cobalt Blue, Rose Red, Deep Madder, Chromium Oxide Green, Viridian & Lime Yellow

## INSTRUCTIONS

**Step 1** - Insert plastic sheet into tote to protect the opposite side from having paint transfer through while wet. Draw up design using pencil lightly on fabric or transfer using carbon paper.

To transfer image using Carbon paper: place black side of carbon paper face down on fabric with your design template aligned over the top and facing you so that it is positioned where you want it to be on the bag once transferred. Draw over the design using a pencil so that it transfers on to the fabric via the carbon paper.

**NOTE** - for each of the following paint applications (whether a mixed colour or single colour), an equal amount of Byron Fabric Medium needs to be mixed in with

the paint (1:1 ratio) in order for it to be retained as a washable design.

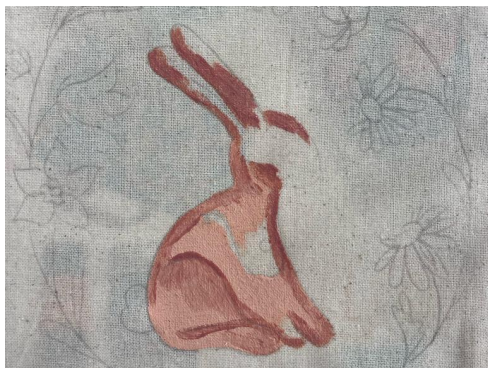


**Step 2** - Mix Byron colours: Red Oxide and White. Mix with equal amount of fabric medium. Paint the body of the bunny using this mix as shown.



**Step 3** - Mix Reeves Copper with equal amount of fabric medium.

Paint in outline areas of the bunny's body and blend in areas of body close to outlines in some areas (as shown in image).



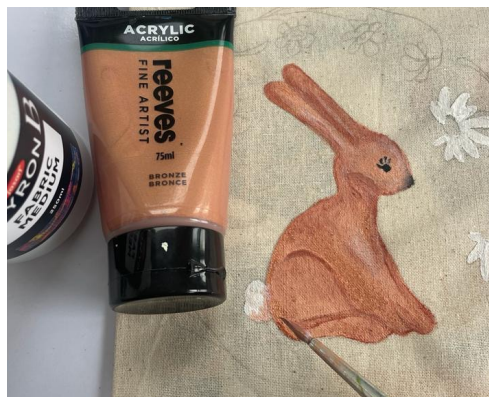
ears, front of face and body to create some lighter areas. Can use some of the mix in step 2 and/or step 3 to blend in over some of the white tail closer to the bunny's body.



**Step 4** - Mix Reeves Payne's Grey with fabric medium in equal amounts. Paint in the small circle of the bunny's eye and linear lashes around the eye. Also paint and blend around the nose area of the bunny (as pictured).



**Step 6** - Mix Reeves Bronze with fabric medium and blend in with areas of the bunny's body as shown.



**Step 7** - Mix Reeves Deep Yellow with fabric medium (1:1 ratio). Paint centre of Daisys.



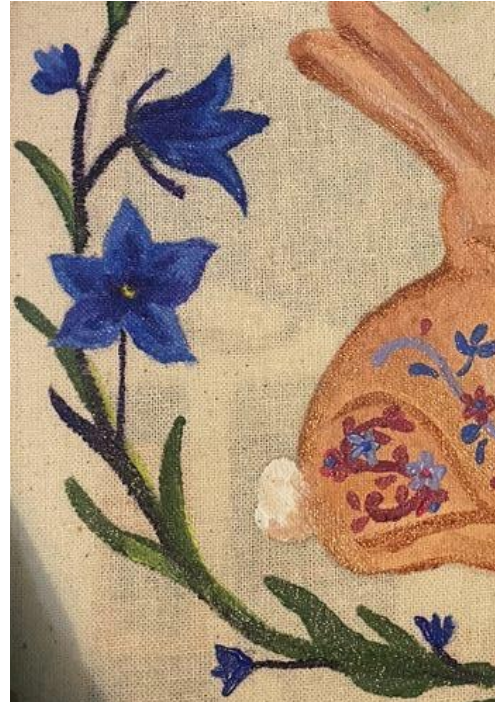
**Step 5** - Mix Byron White with fabric medium in equal parts (1:1 ratio). Paint the daisy petals white. Paint the bunny's tail white and blend in with areas of the bunny's



**Step 8** - Mix Reeves Pale Lemon and fabric medium (1:1 ratio). Paint /blend into the inner part of some of the daisy petals where it meets with the centre (as pictured).



**Step 9** - Mix Byron Cool Blue with fabric medium (1:1 ratio). Use mix to paint in outline and areas of the bell bottomed flowers and buds as shown (also refer to image of completed wreath).



**Step 10** - Mix Reeves Cobalt Blue with fabric medium (1:1 ratio) and paint in other areas of the bell-bottomed flowers and buds (reference image of completed wreath as well).



**Step 11** - Mix Byron Violet with fabric medium (1:1 ratio). Use to paint stalks of bell-bottomed flowers and to add some darker contrast areas in the bell-bottomed flowers (reference process image and image of completed wreath).



**Step 12** - Mix Reeves Rose Red with fabric medium (1:1 ratio). Paint petals of flowers above bunny's head.



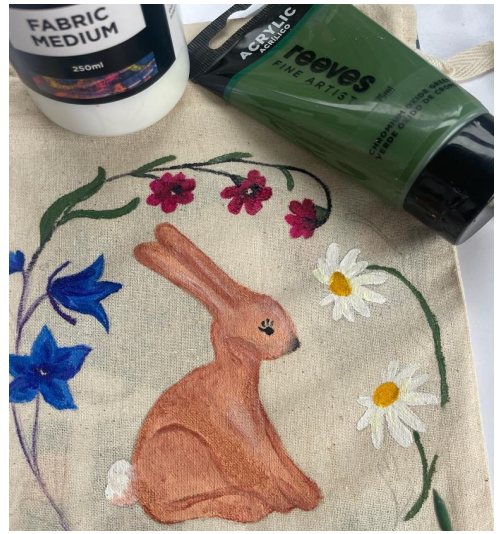
**Step 13** - Mix Reeves Deep Madder with fabric medium (1:1 ratio). Paint and blend in with some of the Rose Red painted petals (particularly closest to the centre of the flowers).



**Step 14** - Use the previous Payne's Grey and fabric medium mix (1:1) from step 4 (or remix as needed), and use to paint in the stalks, parts of the base of the pink flowers and parts of the flower centres and petals as shown in image.



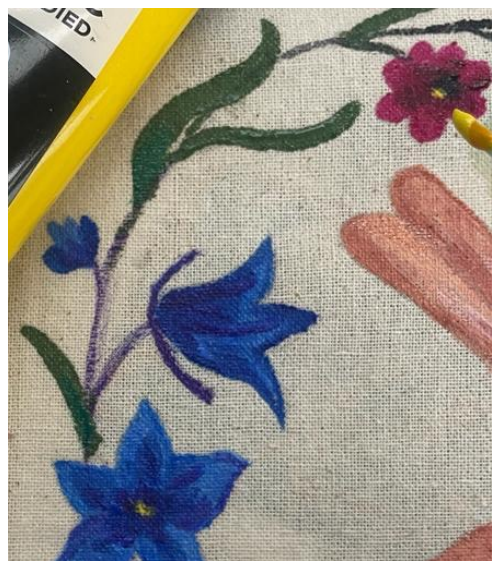
**Step 15** - Mix Reeves Chromium Oxide Green with fabric medium (1:1 ratio). Use to paint in leaves of the pink flowers and areas of the base of the pink flowers. Also use to paint the stalk of the white daisies and the leaves coming down around the left hand side of the wreath and closing the wreath beneath the bunny (refer to completed wreath image).



**Step 16** - Mix Reeves Viridian with fabric medium (1:1 ratio). Paint leaves of the daisy plant.



**Step 17** - Mix Byron Warm Yellow with fabric medium (1:1 ratio). Paint small centre areas of the open blue and pink flowers, and over some small areas of the deep yellow painted daisy centres.



**Step 19** - Mix Byron Lavender with fabric medium (1:1 ratio). Paint swirl line on bunny's body as pictured. Use Cobalt Blue mix from Step 10 (or remix) to paint leaf shapes coming away from the swirl.



**Step 18** - Mix Reeves Lime Yellow with fabric medium (1:1 ratio) and paint in and around some of the leaves and stalks on the left hand side of the wreath near the blue flowers and closing the wreath under the bunny.

**Step 20** - Mix Reeves Deep Madder and White (may like to have a darker and lighter version of this mix to add some variation). Mix this colour with fabric medium (1:1 ratio). Use to paint swirl line on bunny's upper leg and some leaf shapes coming away from the swirl. Also use to paint some flower petals around the Lavender and Cobalt Blue design on bunny's body.



**Step 21** - Use some of each of the Lavender and Cobalt Blue mixes from step 19 to paint some Lavender flower petals close to the swirl design, and to fill in some of the flower centres of both the Deep Madder and Lavender flowers with Cobalt Blue.

Use the Cobalt Blue to paint in a couple of leaf shapes close to the Deep Madder swirl as well. Use the Deep Madder and White mix from step 20 to fill in the centre of one of the Lavender flowers on the bottom swirl design section.



## COMPLETED DESIGN

