

**SPOTLIGHT**

**GET RACE  
READY  
FACE MASK**

-----  
PROJECT SHEET



*It's what you make it*

**SHOW US WHAT  
YOU'RE MAKING**

 /spotlightstores

 @spotlightstores

## GET RACE READY FACE MASK

**e** EASY

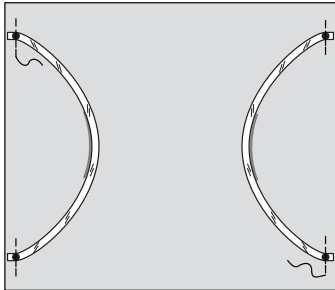
### WHAT YOU'LL NEED

- 1/2 Yard (0.5m) of 1/8"(3mm) -1/4"(6mm) wide Elastic.
- 2 PIECES OF FABRIC 7 3/4" x 7 1/2"(19.5cm x 19cm)

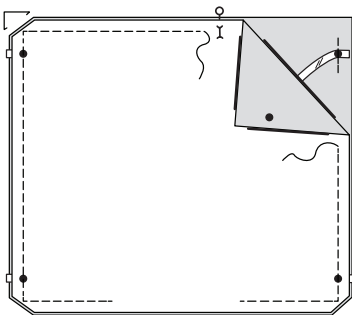
**Suggested Fabrics** - Tightly Woven Cottons

### INSTRUCTIONS

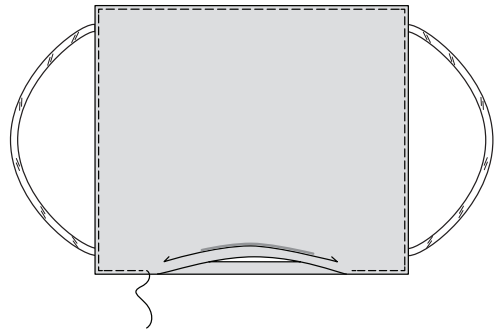
**Step 1** - Cut two pieces of elastic each measuring 7"(18cm) long. On **OUTSIDE**, pin ends of elastic to one face cover section, centering at large circles. Baste.



**Step 2** - Pin face cover sections together. Stitch outer edges in a 1/4"(6mm) seam, leaving an opening.

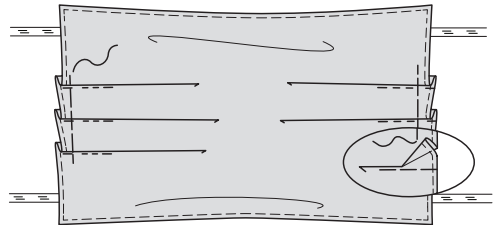


**Step 3** - Turn cover **RIGHT** side out, sew opening. Stitch close to finished edges.

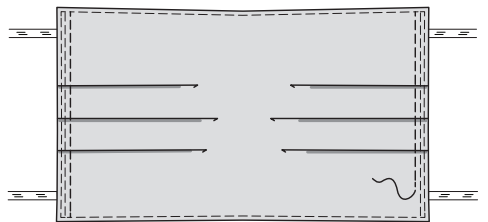


**Step 4** - To make pleats, on **OUTSIDE**, fold along solid lines through all thicknesses.

Bring folds to broken lines. Baste 1/2"(1.3cm) from finished edges.



**Step 5** - On **OUTSIDE**, stitch along basting. Stitch again 1/8"(3mm) away from first stitching.



TEMPLATE

