

**SPOTLIGHT**

# DENIM KNOT BAG

N° 17.23.02  
PROJECT SHEET



*It's what you make it.*

**SHOW US WHAT  
YOU'RE MAKING**

 /spotlightstores

 @spotlightstores

## DENIM KNOT BAG

### **i** INTERMEDIATE

#### WHAT YOU'LL NEED

- 50cm Fabric A - Denim Stripe (outer)
- 50cm Fabric B - Denim Contrast (outer)
- 50cm Fabric C - Big Daisy Printed 142 cm Denim Fabric Medium (lining)
- 75cm x 51cm wide Legacy SF101 fusible cotton woven interfacing
- Matching Gutermann 100% cotton thread
- Pins, tape measure
- Scissors, seam ripper
- Hand needle
- Sewing machine

All fabrics should be 100% cotton, washed & pressed.

#### INSTRUCTIONS

5mm seam allowance used throughout unless otherwise indicated.

Read all instructions carefully before commencing the project.

#### MAKING THE OUTER BAG

**Step 1** - Enlarge template provided to create your bag pattern, marking arrows on each side and the dots indicating the opening in the lining.

**Step 2** - Fold Fabric A in half across the width with right sides together matching selvedge. Place pattern on fabric with long strap parallel to the selvedge and cut out through both layers of fabric. Mark arrows at each side of both pieces. Repeat this for Fabric B.

**Step 3** - Cut both Fabric A and Fabric B pieces in half, this will create the half-slip design for the outside of the bag. Take one side of each outer pieces and sew together to create a half n half design.

**Step 4** - Repeat step 2 using the lining Fabric B, also marking the dots across the bottom for the opening in the lining.

**Step 5** - Using the bag pattern cut out 2 bags from Legacy SF101 fusible cotton woven interfacing. Fuse to the wrong side of joint outer layer bag pieces.

**Step 6** - With Fabric A bag pieces right sides facing sew together around bottom edge from arrow to arrow. Clip into seam allowance at each arrow, turn right side out and press.

**Step 7** - Repeat step 5 to sew Fabric B lining pieces together, leaving bottom edge open between the dots. Do not turn right side out.

**Step 8** - Insert bag into lining, right sides will be facing. Pin together bag and lining along inside outside edges. Sew together starting and finishing 5cm down from top edge of straps.

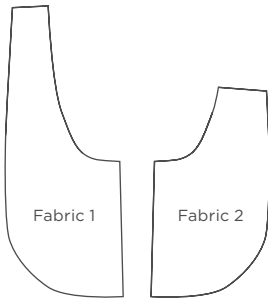
**Step 9** - Pull bag and lining through opening in bottom of lining. Hand sew opening closed and push bag into lining so bag is wrong side out.

**Step 10** - Press under ends of lining straps. Pin together ends of bag long straps and sew together using 1cm seam allowance. Repeat to sew together ends of bag short straps.

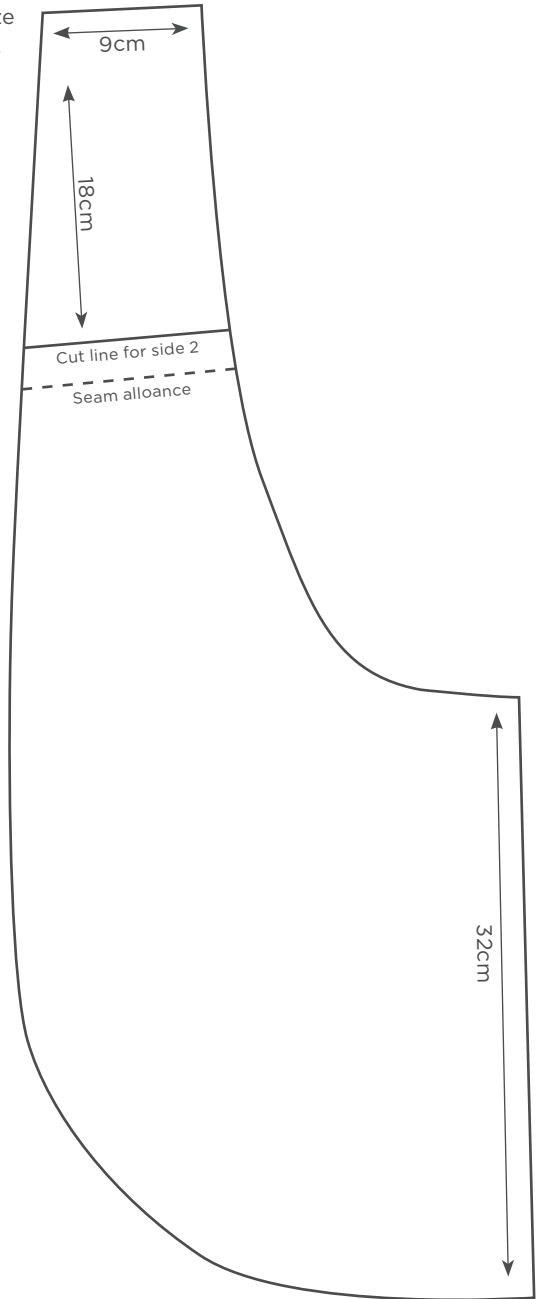
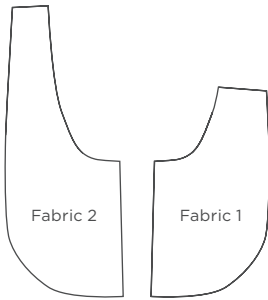
**Step 11** - Press under remaining raw edges on bag and lining straps and pin together with lining strap ends overlapping each other. Turn bag right side out and topstitch around all edges securing handle ends within stitching. To use, thread long strap through short strap.

**Note** - This template has been scaled. You will need to print this template at actual size and blow it up by 400% to make it full size.

\*Right side out.



\*Wrong side out.



\*Second strap is 18cm shorter than long strap.