

**SPOTLIGHT**

# CASA STACKING TEXTURES CROCHET BLANKET

---

Nº 13.21.12  
PROJECT SHEET



*It's what you make it.*

**SHOW US WHAT  
YOU'RE MAKING**



/spotlightstores



@spotlightstores

# CASA STACKING TEXTURES CROCHET BLANKET

## INTERMEDIATE

### WHAT YOU'LL NEED

- 'Bernat' Casa 225 g, Colour A Turquoise Harbour 3 balls, Colour B Cream 4 balls.
- 8 mm crochet hook.
- Scissors, yarn needle, tape measure

### FINISHED SIZE

Approx 127 x 152.5 cm, excluding fringe

### TENSION

7 tr and 4 rows = 10 cm

**Note** – Rows are worked in pairs in the same direction – work 1 row of A. Return to beg and work 1 row of B.

With A, ch 103 loosely (multiple of 3 ch + 4). See diagram

### INSTRUCTIONS

**1st row:** (RS). With A, 1 dc in 2nd ch from hook. \*1 dc in next dc. Ch 2. Skip next 2 ch. Rep from \* to last 2 ch. 1 dc in each of last 2 ch. Pull long loop and secure to prevent from unravelling. Do not turn.

**2nd row:** (RS). Join B with sl st to first dc. Ch 4 (counts as tr and ch 1). Skip next dc. \*3 tr in next ch-2 sp. Ch 1. Skip next dc. Rep from \* to last dc. 1 tr in last sc. Pull long loop and secure to prevent from unravelling. Turn.

**3rd row:** (WS). Pick up loop of A and pull to maintain height of last row. Sl st in first tr. Ch 1. 1 dc in same sp as sl st. \*1 dc in next ch-1 sp. Ch 2. Skip next 3 tr. Rep from \* to turning ch 4. 1 dc in each of 4th and 3rd ch of turning ch 4. Pull long loop. Do not turn.

**4th row:** (WS). Pick up loop of B and pull to maintain height of last row. Sl st in first sc. Ch 4 (counts as tr and ch 1). Skip next dc. \*3 tr in next ch-2 sp. Ch 1. Skip next dc. Rep from \* to last dc. 1 tr in last dc. Pull long loop. Turn.

**5th row:** (RS). As 3rd row.

**6th row:** (RS). As 4th row.

Rep 3rd to 6th rows for pat until work from beg measures approx. 151 cm, ending on 3rd row. Turn.

**Next row:** (RS). With A, ch 1. 1 dc in first dc. 1 dc next dc. \*2 dc in next ch-2 sp. 1 dc in next dc. Rep from \* to last dc. 1 dc in last dc. Turn. Do not fasten off.

**Top Fringe: 1st row:** (WS). \*With A, ch 12. Sl st in 2nd ch from hook and each of next 10 ch. \*\* Sl st in each of next 2 dc of Blanket. Rep from \* to end of row, ending at \*\*.

Fasten off.

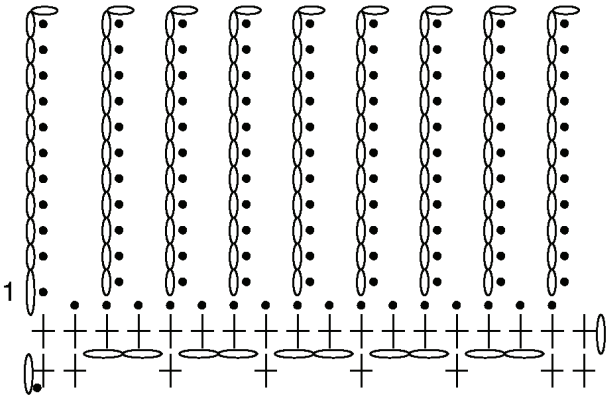
**Bottom Fringe:** With WS facing, join A with sl st to first st at foundation ch.

**1st row:** (WS). \*Ch 12. Sl st in 2nd ch from hook and each of next 10 ch. \*\* Sl st in each of next 2 sts of Blanket. Rep from \* to end of row, ending at \*\*. Fasten off.



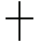

**Side edging:** (RS). Join A with sl st to top left corner. Ch 1. Work 105 dc evenly across side edge of Blanket. Fasten off.

Rep for other side.

DIAGRAM



STICH KEY

-  = chain (ch)
-  = slip stitch (sl st)
-  = double crochet (dc)
-  = triple crochet (tr)

