

**SPOTLIGHT**

**CARON X  
PANTONE  
COLOUR  
CHIP KNIT  
HAT**

N° 13.19.06  
PROJECT SHEET



**SHOW US WHAT  
YOU'RE MAKING**

 /spotlightstores

 @spotlightstores

# CARON X PANTONE COLOUR CHIP KNIT HAT

**i** INTERMEDIATE

## WHAT YOU'LL NEED

- 'Caron x Pantone' 100g: Main Color (MC) Coconut Cream (01001) x 1 braid, Contrast A Olive Oil (01007) x 1 braid, Contrast B Moody Pumpkins (01021) x 1 braid
- Sizes 5.5 mm and 6 mm knitting needles or size needed to obtain correct tension

## VERSION 1 & 2 COLOUR SEQUENCE

**MC** - 11-4302, **A** - 14-1210, **B** - 13-0000,  
**C** - 16-0906, **D** - 16-0737, **E** - 19-0516,  
**F** - 18-1163, **G** - 17-5034, **H** - 19-4340,  
**I** - 19-4324, **J** - 19-0915

## ABBREVIATIONS

**Alt** = Alternat(e)(ing), **Beg** = Begin(ning)(s),  
**Cont** = Continue(ity), **K** = Knit, **K2tog** = Knit next 2 stitches together, **Kfb** = Increase 1 stitch by knitting into front and back of next stitch, **P** = Purl, **Rem** = Remaining, **Rep** = Repeat, **RS** = Right side, **Ssk** = Slip next 2 stitches knitwise one at a time. Pass them back onto left-hand needle, then knit through back loops together, **St(s)** = Stitch(es), **WS** = Wrong side

## SIZE

One size to fit Adult.

## TENSION

15 sts and 20 rows to 10 cm over stocking st using 6mm needles.

## INSTRUCTIONS

**Notes** - Before working with Caron® x Pantone™ multishade yarn braid, separate each color link and wind into 5 separate balls for each braid.

Each color link will be referenced by its

Pantone™ color # (see label).

Due to finite amount of yarn in each shade, pattern tension must be matched to ensure successful results.

Designate each different shade of the 5 separate yarn balls as Contrast A, B, C, D, E, F, G, H, I and J as noted in Materials section (or as desired).

When working from chart, wind small balls of colors to be used, one for each separate area of color in the design. Start new colors at appropriate points. To change colors, twist the two colors around each other where they meet, on WS, to avoid a hole.

With MC and 5.5mm needles, cast on 82 sts.

**1st row** - (RS). K1. \*K2. P2. Rep from \* to last st. K1.

**2nd row** - P1. \*K2. P2. Rep from \* last st. P1. Rep last 2 rows (K2. P2) ribbing until work from beg measures 6.5 cm, ending on a WS row.

Change to 6mm needles.

**Next row** - (RS). \*K20. Kfb. Rep from \* to last 19 sts. K19. 85 sts.

**Next row** - Purl. Next row - Knit row 1 of chart, reading row from right to left.

Chart is now in position. Keeping cont of chart, proceed in stocking st for 23 more rows.

## SHAPE TOP

Keeping cont of chart, proceed as follows -

**25th row** - \*ssk. K13. K2tog. Rep from \* to end of row. 75 sts.

**26th and alt rows** - Purl.

**27th row** - \*ssk. K11. K2tog. Rep from \* to end of row. 65 sts.

**29th row** - \*ssk. K9. K2tog. Rep from \* to end of row. 55 sts.

**31st row** - \*ssk. K7. K2tog. Rep from \* to end of row. 45 sts.

**33rd row** - \*ssk. K5. K2tog. Rep from \* to end of row. 35 sts.

**35th row** - \*ssk. K3. K2tog. Rep from \* to end of row. 25 sts.

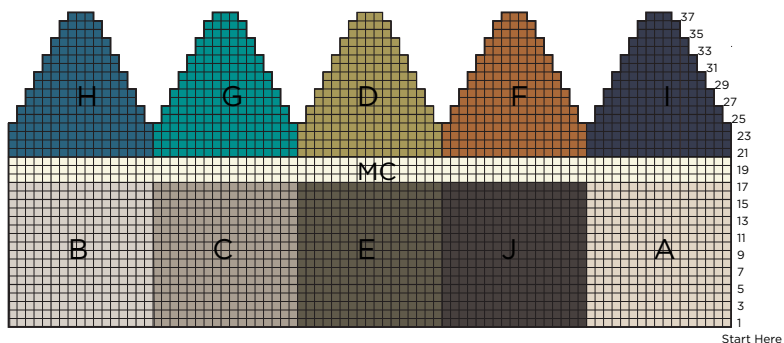
**37th row** - \*ssk. K1. K2tog. Rep from \* to end of row. 15 sts.

Break yarn, leaving a long end. Draw end tightly through rem loops and fasten securely. Sew back seam.

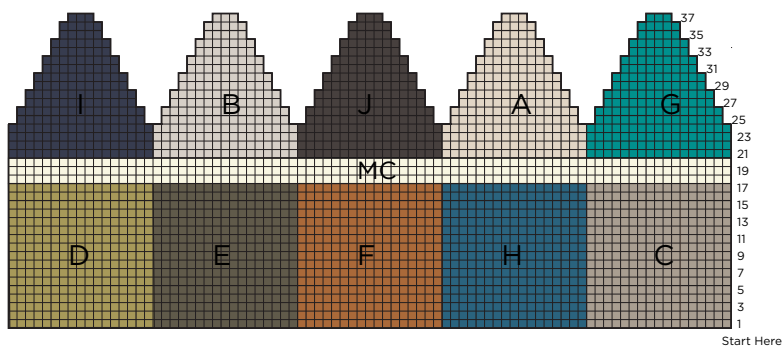
## POMPOM

Using medium size pompom maker, make pom pom with remaining yarn in MC.  
Sew to top of Hat.

Version One



Version Two



Key

- = MC
- = Contrast A
- = Contrast B
- = Contrast C
- = Contrast D
- = Contrast E
- = Contrast F
- = Contrast G
- = Contrast H
- = Contrast I
- = Contrast J