

Blowup Projector Screen

SAFETY INSTRUCTIONS When using any electrically powered product, basic safety precautions should always be followed, including the following: PLEASE READ ALL INSTRUCTIONS CAREFULLY BEFORE USING THE PRODUCT.

Operating Instructions

BEFORE USING THIS PRODUCT, READ, UNDERSTAND, AND FOLLOW ALL SAFETY INSTRUCTIONS.

IMPORTANT SAFETY INSTRUCTIONS

When using electrical products, basic precautions should always be used including the following:

- Can be used for outdoor and indoor.
- This is an electric product-not a toy. Keep the product out of the reach of children and pets to avoid the risk of fire, burns, electrical shock, or serious personal injury. Extra caution is necessary when using this product near children. Do not allow children or pets to play near the product.
- Always unplug the product from the electrical outlet when leaving the house, retiring for the night, or when it is not in use.
- Do not mount or place near gas or electric heaters, fireplaces, candles, or similar sources of heat.
- Do not use attachments not recommended or sold by the product manufacturers, as there a risk of fire, electrical shock, or serious personal injury.
- Do not use anything with this product that is not included in the original manufacturer's packaging when buying this product.
- Do not expose the product to sharp items, as these may cause rupture and damage.
- Inspect power cord for damage before using each time. Extension cords should be at least as great as the electrical rating of the product. Use only extension cord sets rated for both indoor and outdoor use.
- Always connect the product to a Ground Fault Circuit Interrupter (GFCI) electrical outlet when using the product in outdoor applications. Contact a qualified electrician to have a GFCI electrical outlet installed if one is not available.
- Do not hang ornaments or other objects from cord, wire, or light string.
- Do not close a door or window onto the power cord or extension cords, as this may damage the product's wire insulation.
- Do not cover the product with cloth, paper, or material that is not part of the product when in use.
- Do not secure the wiring of the product with staples, nails or other sharp objects, or place wiring on sharp hooks or nails.
- Do not insert hands or fingers into the lamp sockets.

SAVE THESE INSTRUCTIONS FOR FUTURE REFERENCE

Parts Identification

Check to ensure all parts listed are included in the product packaging.

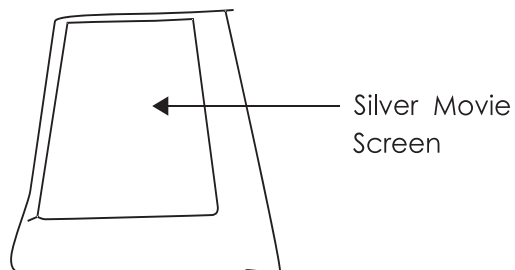
- 1 x Inflatable Projector Screen
- 1 x Transformer
- 9 x Base Stakes
- 5 x Tethers
- 1 x Instruction

To Set Up and Use

How to inflation?

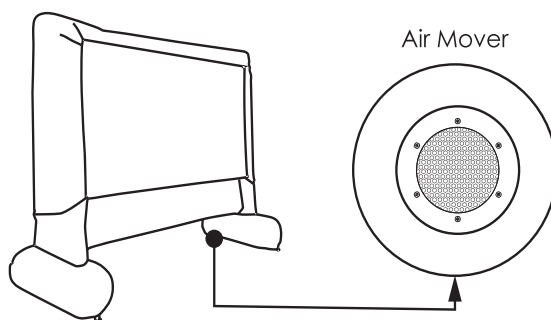
Step 1:

Remove contents from packaging and lay out this product in a clear, flat area. Ensure that the inflatable frame is lying so that the Silver movie screen is facing up.



Step 2:

Find the air mover and place it away from anything that may obstruct its fan.



Step 3:

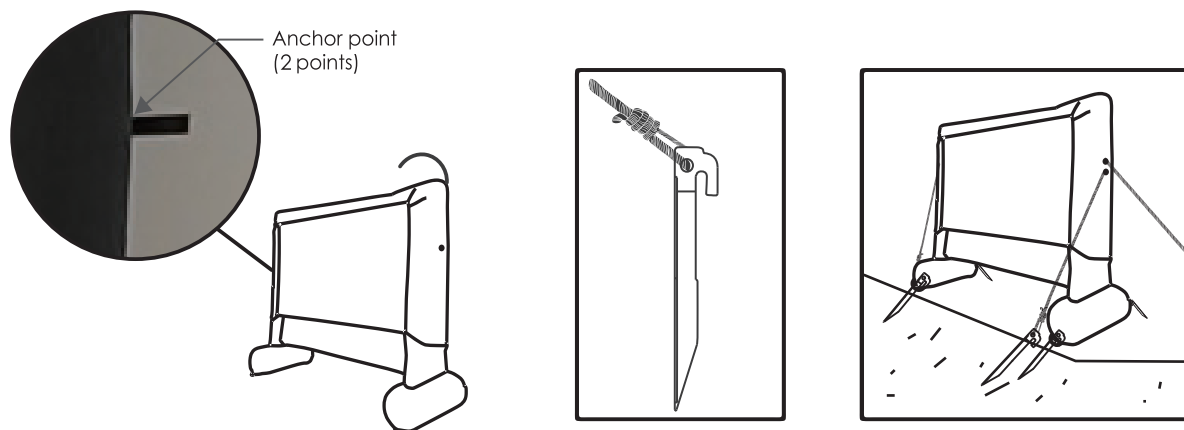
Plug cord into outlet device to inflate the item. This process may take a few minutes. Make sure the air intake is clear of fabric or other obstruction and zipper is fully closed.

Step 4:

Stand the item upright, ensuring that fans are away from obstructions.

Step 5:

For outdoor use, Tie the ropes through each anchor point (2 points) and lock with stakes.



CAUTION:

To reduce the risk of fire and electrical shock:

- Do not install on trees having needles, leaves, or branch covering of metal or materials which look like metal.
- Do not mount or support string in a manner that can cut or damage wire insulation.

Care and Maintenance

- Periodically check to ensure there are no ruptures or tears in the Inflatable Screen. If you find any tears in the fabric, you can repair them with needle and regular thread. No special thread is necessary.
- Always maintain the air vent of the motor base unobstructed and free from dirt and/or debris.
- Periodically unplug the product from the electrical outlet and allow the adaptor and fan to cool to avoid overheating and/or product damage.
- Neatly fold and store the product in a cool, dry location that is away from sunlight or heat sources.

Troubleshooting Guide

Item will not fully inflate.	<ul style="list-style-type: none">☒ Ensure zippers on the back of each inflatable figure are closed.☒ Ensure fabric collar is securely attached to the fan outlet.☒ Inspect fabric for tears and holes, repair if necessary.☒ Ensure fan air vent is free of debris. Unplug fan from the electrical outlet and let cool completely before clearing debris.
Fan does not operate	<ul style="list-style-type: none">☒ Ensure fan is plugged into a working standard AC electrical outlet.☒ Fan may be overheated. Unplug fan from the electrical outlet and let cool completely.☒ Fan may be short-circuited. Only operate fan in a protected location away from rain and snow.

TECHNICAL DATA:

<u>Input voltage, transformer</u>	<u>220 -240V ~ 50/60 Hz</u>
<u>Output voltage, transformer</u>	<u>12 V DC</u>
<u>Output</u>	<u>15W</u>
<u>Safety class</u>	<u>II</u>
<u>Protection rating transformer</u>	<u>IP44</u>
<u>Ambient temperature</u>	<u>- 20- 40 °C</u>

WARRANTY

This product is guaranteed to be free from defects in workmanship & materials for a period of 12 months from the date of purchase. The product will be replaced or refunded for a major failure. The product will be repaired or replaced at our discretion, should the product fail to be of an acceptable quality and failure is not considered a major fault.

Warranty will not apply if the product (a) is damaged through misuse (including failure to maintain), neglect, accident or ordinary wear and tear (including rust, corrosion, normal fading, weathering, staining, discoloration, scratching or chipping); (b) is damaged through exposure to heat; (C) is used commercially; (d) has not been used or installed in accordance with any applicable instructions; or (e) has been modified, repaired or tampered with by the purchaser or an unauthorised service person.

Our goods come with guarantees that cannot be excluded under the Australian Consumer Law. You are entitled to a replacement or refund for a major failure and for compensation for any other reasonably foreseeable loss or damage. You are also entitled to have the goods repaired or replaced if the goods fail to be of an acceptable quality and the failure does not amount to a major failure.

To claim under this warranty, please take this product to the Spotlight where you purchased it. You will need your receipt or other proof of purchase. Additional information may be requested of you to process your claim.

Should you not be able to provide proof of purchase with a receipt; a bank or credit statement, and identification showing your name, address and signature may be required to process your claim.

Any expense relating to the return of the product to the store will be at the expense of the customer. For online purchases, please contact us to arrange where and how to return the product.

To obtain compensation, you will need to provide documentary evidence of the loss or damages suffered, and documentary evidence that such loss or damage was a reasonably foreseeable consequence of a failure. Such evidence may include photographs, statutory declarations, receipts, reports (eg. from your doctor), depending on the loss or damage.

The benefits given by this warranty are in addition to other rights and remedies under the Australian Consumer Law in relation to the goods and services to which this warranty relates.

Warranty excludes consumable replacement/serviceable parts (where applicable to the product) as detailed in the product instruction manual or packaging which are available for purchase.

This warranty is provided by: Spotlight Pty Ltd
111 Cecil St, South Melbourne
VIC, Australia 3205