

28 YARN PROJECTS

MAKER

VOL. 11 | KNIT & CROCHET 2024



30% OFF

EXCLUSIVE SPOTLIGHT VIP CLUB MEMBER OFFER

ANY FULL PRICED YARN

SEE VOUCHER INSIDE FOR TERMS & CONDITIONS

AUD REG \$12 VIP \$10 NZD REG \$14 VIP \$12 SGD REG \$14 VIP \$12 MYR REG RM37 VIP RM22,20





FLINDERS HEXAGON CARDIGAN

'4 Seasons' Flinders 8ply 50g | 100% Cotton

FLINDERS STATEMENT COLLAR

'4 Seasons' Flinders 8ply 50g | 100% Cotton

4.5

3.75



CHECKERED VEST

'4 Seasons' Marvel 8ply 100g | 100% Acrylic









RASPBERRY KISSES BEANIE

'4 Seasons' Pure Wool Entwine 8ply 100g | 100% Australian Wool



RASPBERRY KISSES CARDIGAN

'4 Seasons' Pure Wool Entwine 8ply 100g | 100% Australian Wool



STRIPE CARDIGAN

'4 Seasons' Spot Saver 10ply 200g | 100% Acrylic



FLINDERS HEXAGON CARDIGAN

e EASY



WHAT YOU'LL NEED

- '4 Seasons' Flinders 8ply 50g x1 (2) balls Dk Blue (C1), x2 (3) balls Mandarin (C2), x2 (3) balls Periwinkle (C3), x2 (3) balls Ruby (C4), x2 (3) balls Turmeric (C5), x3 (4) balls Lagoon (C6), x3 (4) balls Jet (C7), x2 (3) balls Blush (C8)
- A 4.5mm crochet hook
- Scissors, yarn needle, tape measure, stitch marker

MEASUREMENTS			
Size		S/M	L/XL
Fits bust	cm	75-90	95-110
Actual size (approx)	cm	96	124
Length (approx)	cm	50	62
Sleeve (approx)	cm	40	45

TENSION

17 sts and 9 rows to 10cm over treble fabric using 4.5mm hook

FLINDERS STATEMENT COLLAR

e EASY



WHAT YOU'LL NEED

- '4 Seasons' Flinders 8ply 50g x1 ball Lagoon (C1), x1 ball Ruby (C2), x1 ball Turmeric (C3), x1 ball Jet (C4)
- A 3.75mm crochet hook
- Scissors, yarn needle, tape measure

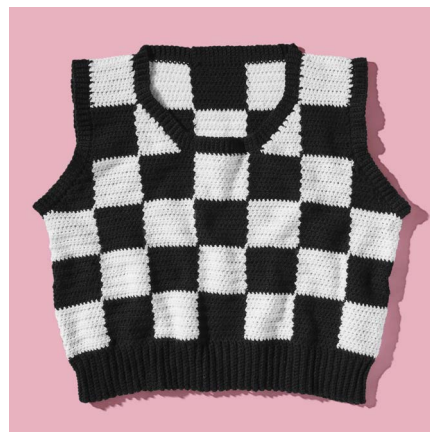
MEASUREMENTS		
Neck circumference (approx)	cm	48 plus ties

TENSION

Motif edges measure (approx.) 6cm
Correct tension is not essential for this project.

CHECKERED VEST

i INTERMEDIATE



WHAT YOU'LL NEED

- '4 Seasons' Marvel 8ply 100g, x2 balls C1 Black, x2 balls C2 White
- 5mm and 4mm crochet hook
- Scissors, yarn needle, 4 stitch makers, tape measure

MEASUREMENTS				
Size		S	M	L
Fits bust	cm	86	94	120

TENSION

6 sts, 5 rows = 4cm in htr

RASPBERRY KISSES BEANIE

e EASY



WHAT YOU'LL NEED

- '4 Seasons' Pure Wool Entwine 8ply 100g x1 ball Cream
- 1 pair 4mm knitting needles or sizes required to give correct tension
- Scissors, yarn needle, tape measure

MEASUREMENTS

To fit head <i>(approx)</i>	cm	56
---------------------------------------	----	----

TENSION

20 stitches x 28 rows to 10cm over stocking stitch, using 4mm needles.

RASPBERRY KISSES CARDIGAN

i INTERMEDIATE



WHAT YOU'LL NEED

- '4 Seasons' Pure Wool Entwine 8ply 100g x6 (6, 7, 7) Main Colour (M) Cream, x1 ball 1st Contrast (C1) Red, x1 ball 2nd Contrast (C2) Pine
- 1 pair each 3.25mm and 4mm knitting needles or sizes required to give correct tension
- 3.25mm long circular needle for neckband sts
- 4 locking stitch markers
- 5 buttons
- Scissors, yarn needle, tape measure

MEASUREMENTS

Size	S	M	L	XL	
To fit bust	cm	75-80	85-90	95-100	105-110
Actual size <i>(approx)</i>	cm	104	112	124	132
Length <i>(approx)</i>	cm	51	52	53	54
Sleeve length <i>(approx)</i>	cm	48	47	45	43

TENSION

20 stitches x 28 rows to 10cm over stocking stitch, using 4mm needles.

STRIPE CARDIGAN

i INTERMEDIATE



WHAT YOU'LL NEED

- '4 Seasons' Spot Saver 10ply, 200g x2 (3-3) balls 1st Colour (C1-red), x2 (2-3) balls 2nd Colour (C2-pink)
- 1 pair each 4.50mm and 5mm knitting needles, one each 4.50mm and 5mm circular needle (80cm) or sizes required to give correct tension
- 5 buttons
- Scissors, yarn needle, tape measure

MEASUREMENTS

Size	S/M	M/L	L/XL	
To fit bust/ chest	cm	85/95	95/105	105/115
Actual size <i>(approx)</i>	cm	100	120	130
Length <i>(approx)</i>	cm	75	75	75
Sleeve length	cm	45	45	45

TENSION

17 sts and 23 rows to 10cm over stocking st, using 5mm needles.





CHUNKY HOODIE

'Abbey Road' Born To Be Wool 100g | 100% Merino Wool





DRAPED VEST

'Moda Vera' Monkey 100g | 100% Acrylic









MULTI COLOURED CARDIGAN

'4 Seasons' Spotsaver 10ply 200g | 100% Acrylic

RUFFLE VEST

'Bella Baby' Pebble 100g | 81% Acrylic, 19% Polyester





COLLARED CARDIGAN

'Moda Vera' Shadow 8ply 100g | 60% Cotton, 40% Acrylic

V NECK DRESS

'Keep Sake' Essence 50g | 100% Merino Wool





CHUNKY HOODIE

i INTERMEDIATE



WHAT YOU'LL NEED

- 'Abbey Road' Born To Be Wool 100g x14 (15, 15, 16) balls, as per size
- 1 pair 15mm knitting needles
- 1 pair 7mm knitting needles
- Large yarn needle
- Stitch markers

MEASUREMENTS					
Size		S	M	L	XL
Fits bust	cm	82	90	98	106
Garment measures	cm	98	102	104	107
Length	cm	64	64	66	66
Sleeve length	cm	44	44	46	46

TENSION

8 stitches x 8 rows to give 10cm square in 1x1 rib using 15mm knitting needles.

DRAPED VEST

i INTERMEDIATE



WHAT YOU'LL NEED

- 'Moda Vera' Monkey 100g x6 (6-7-7) balls Main Colour (M) Black and x1 (2-2-2) ball/s Contrast Colour (C) Pink
- A pair 9mm knitting needles, or size required for correct tension
- Scissors, yarn needle, tape measure

MEASUREMENTS					
Size		S	M	L	XL
Fits bust	cm	80/85	85-90	95-100	105-110
Actual width laid flat (approx)	cm	93	99	105	114
Length (approx excluding collar)	cm	60	61	62	63

TENSION

9.5 sts x 19 rows to 10cm over garter st, using 9mm needles.

MULTI COLOURED CARDIGAN

i INTERMEDIATE



WHAT YOU'LL NEED

- '4 Seasons' Spotsaver 10ply 200g x1 ball 1st Colour (C1) Violet, x1 ball 2nd Colour (C2) Yellow, x1 ball 3rd Colour (C3) Aqua, x1 ball 4th Colour (C4) Dark Pink and x1 ball 5th Colour (C5) Light Blue
- 1 pair each 6mm and 5mm knitting needles or sizes required to give correct tension
- A stitch-holder
- 3 buttons
- Scissors, yarn needle, tape measure

MEASUREMENTS					
Size		S	M	L	XL
To fit bust	cm	75/80	85/90	95/100	105/110
Actual size	cm	103	114	125	137
Length (approx)	cm	53	54	55	56
Sleeve length	cm	45	45	45	45

TENSION

14 sts and 20 rows to 10cm over stocking st, using 6mm needles.

RUFFLE VEST

e EXPERIENCED



WHAT YOU'LL NEED

- 'Bella Baby' Pebble 100g x4 (5-6-6) ball/s
- 4mm crochet hook, or size required for correct tension
- Scissors, yarn needle, tape measure

SIZE

Pattern includes instructions for full customisation to adjust to your desired size. A tension square is necessary to guide the sizing.

TENSION

22st x 18 rows for a 10cm x 10cm tension square.

COLLARED CARDIGAN

i INTERMEDIATE



WHAT YOU'LL NEED

- 'Moda Vera' Shadow 8ply 100g x6 (7-7-8) balls
- 1 pair 4mm knitting needles or size required to give correct tension
- 5 buttons
- Scissors, yarn needle, tape measure

MEASUREMENTS					
Size		S	M	L	XL
To fit bust	cm	80/85	90/95	100/105	110-115
Actual size (approx)	cm	93	105	113	120
Length (approx)	cm	56	57	58	59
Sleeve length	cm	43	43	43	43

TENSION

22 sts and 30 rows to 10cm over stocking st, using 4mm needles.

V NECK DRESS

i INTERMEDIATE



WHAT YOU'LL NEED

- 'Keep Sake' Essence 50g x13 (14-15) balls
- 1 pair 4mm knitting needles and 4mm circular needle (80cm) or size required to give correct tension
- Scissors, yarn needle, tape measure

MEASUREMENTS				
Size		S	M	L
To fit bust	cm	80/85	90/95	100/105
Actual size (approx at underarm)	cm	90	100	110
Length (approx)	cm	108	110	112

TENSION

22 sts and 32 rows to 10cm over stocking st, using 4mm needles.





CROSSOVER WRAP

'Moda Vera' Reflection 100g | 100% Acrylic

FAIR ISLE TRIM BEANIE & SCARF

'4 Seasons' Pure Wool 8 Ply 50g | 100% Wool

PONCHO SWEATER

'4 Seasons' Marvel 12ply 100g | 100% Acrylic

4.0

3.25

4.0

4.5

5.5



OFF THE SHOULDER SWEATER

'Moda Vera' Reflection 100g | 100% Acrylic

HALF & HALF CARDIGAN

'4 Seasons' Half 'n' Half 100g | 50% Acrylic, 50% Wool









DROP STITCH SWEATER

'Moda Vera' Bellbird Woolblend 100g | 70% Wool, 30% Soybean

7.0	8.0
-----	-----

RIB PATTERN SWEATER

'Abbey Road' Kung Fu Cotton 100g | 100% Cotton

4.5	5.5
-----	-----



TEXTURE ZIP UP

'4 Seasons' Marvel Denim Effects 100g | 100% Acrylic





FAIR ISLE BEANIE

i INTERMEDIATE



WHAT YOU'LL NEED

- '4 Seasons' Pure Wool 8ply 50g x2 balls Main Colour (M) and x1 ball Contrast Colour (C)
- 1 pair each 4mm and 3.25mm knitting needles or sizes required to give correct tension
- Scissors, yarn needle, tape measure

MEASUREMENTS		
Size	FEMALE	MALE
To fit head (approx)	cm 56	59

TENSION

22 sts and 28 rows to 10cm over stocking st, using 4mm needles.

To work a 15cm x 15cm tension square, using 4mm needles cast on 33 sts.

Work 42 rows stocking st. If you have less st to 10cm use a smaller size needle, if you have more sts to 10cm, use a larger size needle.

FAIR ISLE TRIM SCARF

i INTERMEDIATE



WHAT YOU'LL NEED

- '4 Seasons' Pure Wool 8ply 50g x5 balls Main Colour (M) and x1 ball Contrast Colour (C)
- 1 pair 4mm knitting needles or size required to give correct tension
- 2 stitch-holders
- A spare needle
- Scissors, yarn needle, tape measure

MEASUREMENTS		
Size		
Width (approx)	cm	20
Length (approx)	cm	187

TENSION

22 sts and 28 rows to 10cm over stocking st, using 4mm needles.

To work a 15cm x 15cm tension square, using 4mm needles cast on 33 sts.

Work 42 rows stocking st. If you have less st to 10cm use a smaller size needle, if you have more sts to 10cm, use a larger size needle.

CROSSOVER WRAP

i INTERMEDIATE



WHAT YOU'LL NEED

- 'Moda Vera' Reflection 100g x5 (6-7) balls
- 1 pair 4mm knitting needles and 4mm circular needle (80cm) or size required to give correct tension
- Scissors, yarn needle, tape measure

MEASUREMENTS				
Size		S	M	L
To fit bust	cm	80/85	90/95	100/105
Actual size (approx at underarm)	cm	95	105	115
Length (approx)	cm	55	56	57
Sleeve length	cm	43	43	43

TENSION

26 sts and 28 rows to 10cm over stocking st, using 4mm needles.

PONCHO SWEATER

i INTERMEDIATE



WHAT YOU'LL NEED

- '4 Seasons' Marvel 12ply 100g x5 (6-6-7) balls
- 1 pair each 5.50mm and 4.50mm knitting needles or sizes required to give correct tension
- 4 stitch-holders
- A stitch-marker if desired
- Scissors, yarn needle, tape measure

MEASUREMENTS					
Size		S	M	L	XL
Fits underarm <i>(approx)</i>	cm	75-80	85-90	95-100	105-110
Garment measures at underarm	cm	100	110	120	130
Length at longest point <i>(approx)</i>	cm	52	54	56	58
Sleeve seam <i>(approx)</i>	cm	34	34	34	34

TENSION

22 sts x 34 rows to 10cm over patt, using 5.50mm needles.

To work a 15cm x 15cm tension square using 5.50mm needles, cast on 33 sts.

Work 52 rows patt as for Sleeves.

OFF THE SHOULDER SWEATER

e EASY



WHAT YOU'LL NEED

- 'Moda Vera' Reflection 100g x4 (5-5-6) balls
- One pair each 4mm and 3.25mm knitting needles, or sizes required for correct tension
- Matching plain yarn for sewing seams
- 2 stitch-holders
- Scissors, yarn needle, tape measure

MEASUREMENTS					
Size		S	M	L	XL
Fits bust	cm	75/80	85-90	95-100	105-110
Garment measures	cm	90	100	110	120
Length <i>(approx)</i>	cm	52	53	54	55
Sleeve length	cm	45	45	45	45

TENSION

22 sts x 28 rows to 10cm over stocking st, using 4mm needles.

To work a 15cm x 15cm tension square, using 4mm needles cast on 33 sts. Work 42 rows stocking st. Cast off.

If you have more sts to 10cm, use a bigger size needle. If you have less sts to 10cm, use a smaller size needle.

HALF & HALF CARDIGAN

i INTERMEDIATE



WHAT YOU'LL NEED

- '4 Seasons' Half 'n' Half 100g x4 (5-6) balls 1st Colour (C1), x4 (5-6) balls 2nd Colour (C2)
- 1 pair each 4.50mm and 5mm knitting needles, a 4.50mm circular needle (80cm) or sizes required to give correct tension
- 4 buttons
- Scissors, yarn needle, tape measure

MEASUREMENTS				
Size		S/M	M/L	L/XL
To fit bust/ chest	cm	80/90	90/100	100/110
Actual size <i>(approx)</i>	cm	110	120	130
Length <i>(approx)</i>	cm	67	68	69
Sleeve length	cm	45	45	45

TENSION

18 sts and 23 rows to 10cm over stocking st, using 5mm needles.

DROP STITCH SWEATER

e EASY



WHAT YOU'LL NEED

- 'Moda Vera' Bellbird Woolblend 100g x2 (3-3-3) balls
- One pair each 8mm and 7mm knitting needles, or sizes required for correct tension
- 2 stitch-holders
- Scissors, yarn needle, tape measure

MEASUREMENTS					
Size		S	M	L	XL
Fits bust	cm	75/80	85-90	95-100	105-110
Garment measures	cm	100	110	120	130
Length (approx)	cm	53	54	55	56
Sleeve length	cm	45	45	45	45

TENSION

11.5 sts x 16 rows to 10cm over stocking st, using 8mm needles.

Note - This garment has been worked on bigger needles and at a looser tension than normally recommended.

To work a 15cm x 15cm tension square, using 8mm needles cast on 17 sts. Work 24 rows stocking st. Cast off.

If you have more sts to 10cm, use a bigger size needle. If you have less sts to 10cm, use a smaller size needle.

RIB PATTERN SWEATER

i INTERMEDIATE



WHAT YOU'LL NEED

- 'Abbey Road' Kung Fu Cotton 100g x7 (8-9-9) balls
- One pair each 5.50mm and 4.50mm knitting needles, or sizes required for correct tension
- 2 stitch-holders
- Scissors, yarn needle, tape measure

MEASUREMENTS					
Size		S	M	L	XL
Fits bust	cm	75/80	85-90	95-100	105-110
Garment measures	cm	100	110	120	130
Length (approx)	cm	55	56	57	58
Sleeve length	cm	43	43	43	43

TENSION

18 sts x 24 rows to 10cm first patt, using 5.50mm needles.

To work a 15cm x 15cm tension square, using 5.50mm needles cast on 27 sts. Work 36 rows first patt as for Back. Cast off.

If you have more sts to 10cm, use a bigger size needle. If you have less sts to 10cm, use a smaller size needle.

TEXTURE ZIP UP

e EXPERIENCED



WHAT YOU'LL NEED

- '4 Seasons' Marvel Denim Effects 100g x2 (3-3) balls 1st Colour (C1) Cranberry, x3 (4-4) balls 2nd Colour (C2) Eclipse (blue), x1 (1-1) ball 3rd Colour (C3) Koala (grey)
- 1 pair each 4.50mm and 5.50mm knitting needles and two 4.50mm double pointed needles, or sizes required to give correct tension
- 3 stitch-holders
- 68-70cm open ended zipper (or length desired)
- Scissors, yarn needle, tape measure

MEASUREMENTS				
Size		S/M	M/L	L/XL
To fit bust/ chest	cm	80/90	90/100	100/110
Actual size (approx)	cm	100	110	120
Length (approx)	cm	56	57	58
Sleeve length	cm	45	45	45

TENSION

16 sts and 23 rows to 10cm over stocking st, using 5.50mm needles.



HOODED COWL

'4 Seasons' Pure Wool 8 ply 50g | 100% Wool

FLINDERS HEAD WRAP

'4 Seasons' Flinders 8ply 50g | 100% Cotton









STRIPED CUSHION & THROW

'4 Seasons' Spotsaver 10ply 200g | 100% Acrylic



BRIOCHE SCARF

'4 Seasons' Pure Wool Entwine 100g | 100% Australian Wool





CROSS BODY BAG

'Moda Vera' Monkey 100g | 100% Acrylic

GRANNY BLANKET

'4 Seasons' Spot Saver 10ply 200g | 100% Acrylic

9.0

5.0



HOODED COWL

i INTERMEDIATE



WHAT YOU'LL NEED

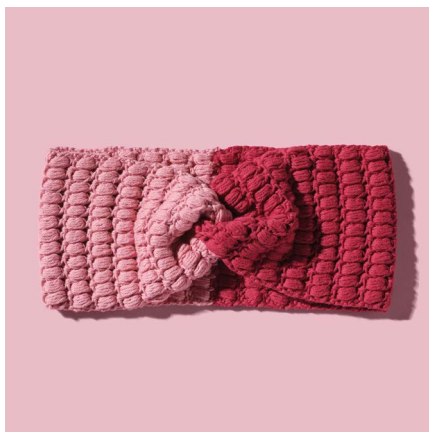
- 4 Seasons Pure Wool 8ply 50g x5 Ruby
- 4mm circular knitting needles or size required to give correct tension
- 2 buttons
- Cable needle, scissors, yarn needle, tape measure

TENSION

22 stitches x 28 rows to 10cm over stocking stitch.

FLINDERS HEAD WRAP

e EASY



WHAT YOU'LL NEED

- '4 Seasons' Flinders 8ply 50g x1 ball Ruby (C1), x1 ball Blush (C2)
- A 4mm crochet hook
- Scissors, yarn needle, tape measure

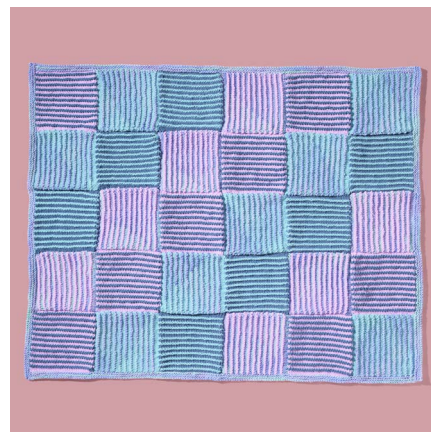
MEASUREMENTS		
Size		
To fit head (approx)	cm	56
Circumference (approx relaxed)	cm	54
Width (approx)	cm	11

TENSION

Correct tension is not required for this project

STRIPED THROW

e EASY



WHAT YOU'LL NEED

- '4 Seasons' Spotsaver 10ply 200g balls and Spotsaver Print 10ply 140g balls x2 balls 1st Colour (C1) Aqua, x2 balls 2nd Colour (C2) Lilac, x2 balls 3rd Colour (C3) Peacock and x2 balls 4th Colour (C4) Water Blues Print
- 1 pair 6mm knitting needles and a 6mm circular knitting needle 80cm long or size required to give correct tension
- Scissors, yarn needle, tape measure

MEASUREMENTS		
Width (approx)	cm	103
Length (approx)	cm	123

TENSION

14 sts and 26 rows to 10cm over stripe patt, using pair of 6mm needles.

STRIPED CUSHION

e EASY



WHAT YOU'LL NEED

- '4 Seasons' Spotsaver 10ply 200g x1 ball 1st Colour (C1) Lilac, x1 ball 2nd Colour (C2) Aqua and x1 ball 3rd Colour (C3) Peacock
- 1 pair 6mm knitting needles or size required to give correct tension
- A 41cm x 41cm cushion insert
- Scissors, yarn needle, tape measure

MEASUREMENTS		
Width (approx)	cm	40
Length (approx)	cm	40

TENSION

14 sts and 26 rows to 10cm over stripe patt, using pair of 6mm needles.

BRIOCHE SCARF

i INTERMEDIATE



WHAT YOU'LL NEED

- '4 Seasons' Pure Wool Entwine 100g x2 balls 1st Colour (C1) and x2 balls 2nd Colour (C2)
- x2 5mm double pointed needles or size required to give correct tension
- Scissors, yarn needle, tape measure

MEASUREMENTS		
Width (approx)	cm	17
Length	cm	180

TENSION

33 Brioche sts = approx 17cm in width, using 5mm needles.

CROSS BODY BAG

e EASY



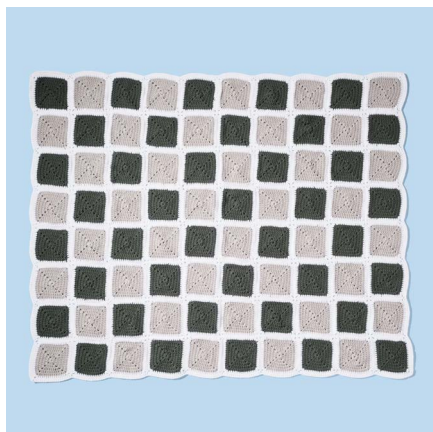
WHAT YOU'LL NEED

- 'Moda Vera' Monkey 100g x2 balls
- 30cms 'Birch' chunky zip
- 32mm 'Birch' quick release buckle set
- 1.7m 'Birch' belting black 32mm
- 9mm crochet hook
- Sewing thread to suit both yarn and band
- Sewing needle (hand sewn finish) or sewing machine (machine sewn finish)
- Scissors, yarn needle, tape measure

MEASUREMENTS		
Size		
Width (approx)	cm	36
Height (approx)	cm	23
Depth (approx)	cm	10

GRANNY BLANKET

e EASY



WHAT YOU'LL NEED

- '4 Seasons' Spot Saver 10ply 200g
x3 balls Main Colour (M) Mallard, x3
balls Silver 1st Contrast (C1), x2 balls
2nd Contrast (C2) Cream
- 5mm crochet hook
- Scissors, yarn needle, tape measure

MEASUREMENTS		
Width (<i>approx</i>)	cm	136
Height (<i>approx</i>)	cm	171

TENSION

1 Granny square measures 10cm x 10cm