

THE DOG OUTFIT

Nº 06.22.26
PROJECT SHEET



It's what you make it.

**SHOW US WHAT
YOU'RE MAKING**

 [/spotlightstores](https://www.facebook.com/spotlightstores)

 [@spotlightstores](https://www.instagram.com/spotlightstores)

THE DOG OUTFIT

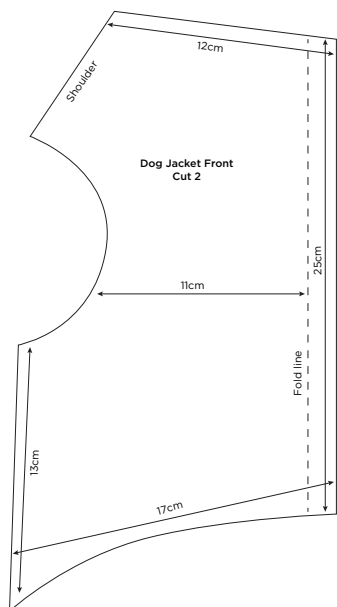
i INTERMEDIATE

WHAT YOU'LL NEED

- 700cm Fabric
- Stud fasteners x 4
- Matching thread

INSTRUCTIONS

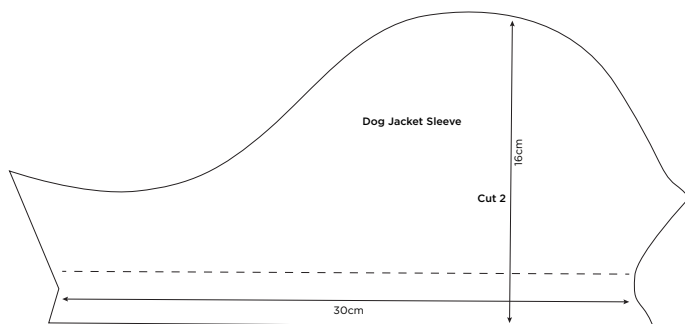
Step 1 - Cut out fabric for dog jacket using pattern pieces provided.



The information on this project sheet is presented in good faith, but no warranty is given, nor results guaranteed. Quantities and selections may vary at each store. Copyright Spotlight 2021.

SPOTLIGHT

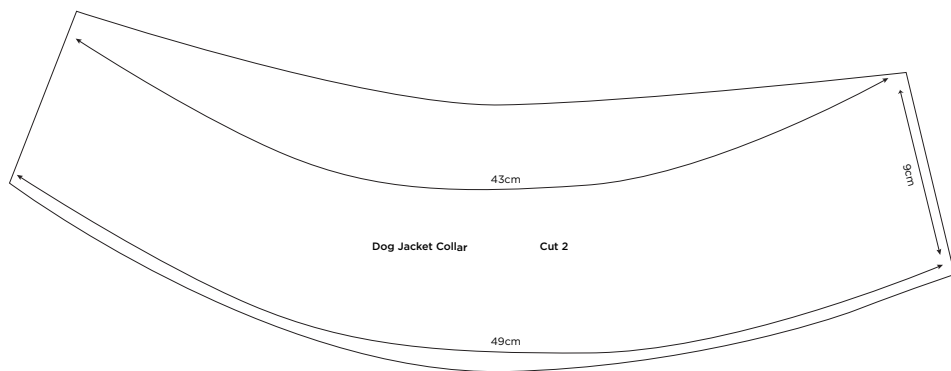
Step 2 - Fold the long straight edge of each front piece over and press in place. Top stitch 1.5cm from the folded edge.



Step 3 - With right sides together, stitch the 2 front pieces to the back piece at the shoulder seams.

Step 4 - Place the 2 collar pieces right sides together and stitch around 3 x edges - the 2 short edges and the longest edge. Clip the corners, turn right side out and press. Top stitch around the 3 edges.

Step 5 - Place the collar against the right side of the fabric, with the open edge along the neck edge. Pin in place and stitch together. Press edge flat towards the jacket. Top stitch on outside.



Step 6 - Hem the sleeves along the long straight edge then attach the sleeves to the jacket - the narrow part of the sleeve goes at the front.

Step 7 - Stitch the front and back sides and sleeves together in one go, sewing up the side and continuing along the sleeve. Repeat for the other side.

Step 8 - Hem the bottom edge.

Step 9 - Apply 4 or 5 studs evenly down the front of the jacket as per instructions on the packet.

Note - This template has been scaled. You will need to print this template at actual size and blow it up by 400% to make it full size.