



1

**HALF 'N' HALF BOBBLE THROW**  
'4 Seasons' Half 'n' Half 100g | 50% Acrylic, 50% Wool



**PURE WOOL ENTWINE STRIPE VEST**

'4 Seasons' Pure Wool Entwine 8ply 100g | 100% Pure Wool







**BRIGHTON SHORT SLEEVE SWEATER**

'4 Seasons' Brighton Cotton Blend 8ply 50g | 50% Cotton, 50% Acrylic







**ESSENCE MULTI STRIPE CARDIGAN**  
'Keep Sake' Essence 8ply 50g | 100% Merino





**MONKEY TWIST SCARF**

'Moda Vera' Monkey Twist 100g | 100% Acrylic

**HARRIS CABLE SWEATER**

'Moda Vera' Harris 100g | 100% Polyester

**DAISY LONG LINE CARDIGAN**

'Moda Vera' Daisy 100g | 41% Acrylic, 23% Glitter, 18% Nylon, 12% Mohair, 6% Superwash Wool



9.0

6.0

5.0



**ESSENCE CABLE BEANIE**

'Keep Sake' Essence 8ply 50g | 100% Merino



**MARVEL DENIM EFFECTS 12 PLY COAT**

'4 Seasons' Marvel Denim Effects 12ply 100g | 100% Acrylic







**DAISY STRIPED JUMPER**

'Moda Vera' Daisy 100g | 41% Acrylic, 23% Glitter,  
18% Nylon, 12% Mohair, 6% Superwash Wool



**HARRIS 3/4 SLEEVE JACKET**  
'Moda Vera' Harris 100g | 100% Polyester





**BELLBIRD SHORT ROW SCARF**

'Moda Vera' Bellbird Woolblend 100g | 70% Wool, 30% Soy bean



**WOOL TO BE WILD DIAGONAL SWEATER**

'Abbey Road' Wool To Be Wild 100g | 52% Merino Wool, 48% Acrylic





**THE WIND CRIES MERINO LADY'S CARDIGAN**

'Abbey Road' The Wind Cries Merino 25g | 65% Merino, 25% Alpaca, 10% Polyester

**HARRIS GAUNTLETS**

'Moda Vera' Harris 100g | 100% Polyester







**FLINDERS VEST**

'4 Seasons' Flinders 8ply 50g | 100% Cotton

**WOOL TO BE WILD INFINITY SCARF**

'Abbey Road' Wool To Be Wild 100g | 52% Merino Wool, 48% Acrylic







**ESSENCE CLASSIC CARDIGAN**  
'Keepsake' Essence 8ply 50g | 100% Merino











**SHADOW SHORT SLEEVE TOP**

'Moda Vera' Shadow 8ply 100g | 60% Acrylic, 40% Cotton



**KOOSH FLOOR RUG**

'Moda Vera' Koosh Cotton Blend 100g | 50% Cotton, 50% Acrylic



**PURE WOOL 8 PLY BEANIE**

'4 Seasons' Pure Wool 8ply 50g | 100% Pure Wool



**SPOT SAVER CHEVRON SCARF**

4 Seasons' Spot Saver Prints 10ply 140g | 100% Acrylic



**MONTANA VEST**

4 Seasons' Montana 8Ply 100g | 90% Wool, 7% Acrylic, 3% Viscose









**BELLBIRD CABLE SWEATER**

'Moda Vera' Bellbird Woolblend 100g | 70% Wool, 30% Soy bean











**GLORY GLORY WRAP TOP**



**FLINDERS LOOSE TOP WITH POCKETS**  
'4 Seasons' Flinders Cotton 8ply 50g | 100% Cotton





**GLORY GLORY SCARF**

'Abbey Road' Glory Glory 200g | 65% Microfibre, 35% Mohair



**MONKEY DIAGONAL SCARF**

'Moda Vera' Monkey 100g | 100% Acrylic



**BRIGHTON LACEY SCARF**

'4 Seasons' Brighton Cotton Blend 8ply 50g | 50% Acrylic, 50% Cotton



**SHADOW SCARF**

'Moda Vera' Shadow 8ply 100g | 60% Acrylic, 40% Cotton



**FREEDOM CROCHET BAG**  
'Abbey Road' Freedom 100g | 100% Cotton

4.0



**DAISY WRAP**

'Moda Vera' Daisy 100g | 41% Acrylic, 23% Glitter,  
18% Nylon, 12% Mohair, 6% Superwash Wool



**MONKEY PATCHWORK TRIANGLE THROW**  
'Moda Vera' Monkey 100g | 100% Acrylic





# PATTERNS





## HALF 'N' HALF BOBBLE THROW

**i** INTERMEDIATE

### WHAT YOU'LL NEED

- '4 Seasons' Half 'n' Half 100g: x 4 balls Colour 1 (C1), 4 balls Colour 2 (C2), 4 balls Colour 3 (C3), 4 balls Colour 4 (C4)
- A 9mm crochet hook or size required to give correct tension
- 12cm wide piece of cardboard
- Scissors, yarn needle, tape measure

MEASUREMENTS		
Width (approx)	cm	77
Length (approx)	cm	120

### TENSION

9 sts and 7 rows to 10cm over patt using 9mm hook and 2 strands of Half 'n' Half tog.



## PURE WOOL ENTWINE STRIPE VEST

**i** INTERMEDIATE

### WHAT YOU'LL NEED

- '4 Seasons' Pure Wool Entwine 100g x 4 (5-5-6) balls 1st Colour (C1-plain); 2 (2-3-3) balls 2nd Colour (C2-print)
- 1 pair each 4mm and 3.25mm knitting needles or sizes required to give correct tension
- 1 stitch-holder
- Scissors, yarn needle, tape measure

MEASUREMENTS					
Size		S	M	L	XL
To fit underarm	cm	85	95	105	115
Actual size (approx)	cm	97	107	117	127
Length (approx)	cm	60	61	62	63

### TENSION

20 sts and 28 rows to 10cm over stocking st, using 4mm needles.



## KUNG FU COTTON COLOURED VEST

**i** INTERMEDIATE

### WHAT YOU'LL NEED

- 'Abbey Road' Kung Fu Cotton 100g x 4 (5-5-6) balls 1st Colour (C1-dark blue), 1 (1-1-1) ball 2nd Colour (C2-aqua), 1 (2-2-3) ball/s 3rd Colour (C3-blush)
- 1 pair each 6mm and 5mm knitting needles or sizes required to give correct tension
- 1 stitch-holder
- Scissors, yarn needle, tape measure

MEASUREMENTS					
Size		S	M	L	XL
To fit bust	cm	80/85	90/95	100/105	110/115
Actual size (approx)	cm	100	110	120	130
Length	cm	52	53	54	55

### TENSION

19 sts and 32 rows to 10cm over patt, using 6mm needles.

**Note** - This vest has been worked on bigger needles than normally recommended.



## BRIGHTON SHORT SLEEVE SWEATER

**i** INTERMEDIATE

### WHAT YOU'LL NEED

- '4 Seasons' Brighton Cotton Blend 8ply 50g x 8 (9-10) balls
- A pair each 4mm and 3.75mm knitting needles or sizes required to give correct tension
- 2 stitch-holders
- Scissors, yarn needle, tape measure

MEASUREMENTS				
Size		S	M	L
To fit bust	cm	80/85	90/95	100/105
Actual size (approx)	cm	88	98	108
Length (approx)	cm	50	51	52
Sleeve length (approx)	cm	10	10	10

### TENSION

22 sts and 30 rows to 10cm over stocking st, using 4mm needles.



## ESSENCE STRIPED SWEATER

**i** INTERMEDIATE

### WHAT YOU'LL NEED

- 'Keepsake' Essence 50g x 4 (5-5-5) balls 1st Colour (C1) Donkey, 2 (3-3-3) balls 2nd Colour (C2) Cream and 3 (3-4-4) balls 3rd Colour (C3) Butter
- 1 pair each of 4mm and 3.25mm knitting needles or sizes required to give correct tension
- 4 stitch-holders
- Scissors, yarn needle, tape measure

MEASUREMENTS					
Size		S	M	L	XL
To fit bust	cm	75/80	85/90	95/100	105/110
Actual size (approx)	cm	95	105	115	125
Length (approx)	cm	59	60	61	62
Sleeve length (approx)	cm	43	43	43	43

### TENSION

22 sts x 32 rows to 10cm over stocking st, using 4mm needles.

To work a 15cm x 15cm tension square, using 4mm needles cast on 33 sts.

Work 48 rows stocking st. Cast off.

If you have more sts to 10cm, use a larger size needle, if you have less sts to 10cm, use a smaller size needle.



## ESSENCE MULTI STRIPE CARDIGAN

**i** INTERMEDIATE

### WHAT YOU'LL NEED

- 'Keep Sake' Essence 50g x 5 (6-6-7) balls 1st Colour (C1-royal), 5 (6-6-7) balls 2nd Colour (C2-lemon), 4 (5-5-6) balls 3rd Colour (C3-snow), 3 (4-4-5) balls 4th Colour (sky blue)
- 1 pair 4mm knitting needles and 3.25mm circular needle (80cm) or sizes required to give correct tension
- 5 buttons
- Scissors, yarn needle, tape measure

MEASUREMENTS					
Size		S	M	L	XL
To fit bust	cm	80/85	90/95	100/105	110/115
Actual size (approx)	cm	100	110	120	130
Length to shoulder (approx)	cm	72	72	72	72
Sleeve length (approx)	cm	45	45	45	45

### TENSION

27 sts and 34 rows to 10cm over patt, using 4mm needles.



## MONKEY TWIST SCARF

**i** INTERMEDIATE

### WHAT YOU'LL NEED

- 'Moda Vera' Monkey Twist 100g x 4 balls
- 1 pair 9mm knitting needles or size required to give correct tension
- Scissors, yarn needle, tape measure

MEASUREMENTS		
Width (approx)	cm	23
Length (approx, excluding tassels)	cm	180

### TENSION

8.5 sts and 13 rows to 10cm over stocking st, using 9mm needles.



## HARRIS CABLE SWEATER

**i** INTERMEDIATE

### WHAT YOU'LL NEED

- 'Moda Vera' Harris 100g x 8 (9-10) balls
- 1 pair each 6mm and 5.50mm knitting needles and 5.50mm circular needle (60cm) or sizes required to give correct tension
- Cable needle
- Scissors, yarn needle, tape measure

MEASUREMENTS				
Size		S/M	M/L	L/XL
To fit chest	cm	90/95	95/100	100/110
Actual size (approx)	cm	104	110	116
Length (approx)	cm	64	66	68
Sleeve length	cm	50	50	50

### TENSION

15 sts and 21 rows to 10cm over stocking st, using 6mm needles.



## DAISY LONG LINE CARDIGAN

**i** INTERMEDIATE

### WHAT YOU'LL NEED

- 'Moda Vera' Daisy 100g x 3 (4-4) 5 balls
- 1 pair of 4.50mm and 5.00mm knitting needles or sizes required to give correct tension
- Scissors, yarn needle, tape measure, 5 buttons

MEASUREMENTS					
Size		S	M	L	XL
To fit bust	cm	75-80	85-90	95-100	105-110
Actual size	cm	106	116	126	136
Length	cm	68	69	70	71
Sleeve length	cm	43	44	45	46

### TENSION

19 sts x 27 rows to 10cm over stocking st, using 5.00mm needles.



## ESSENCE CABLE BEANIE

**i** INTERMEDIATE

### WHAT YOU'LL NEED

- 'Keep Sake' Essence 50g x 2 balls
- 1 set each of 3.25mm and 4mm double pointed knitting needles, or sizes required to give correct tension
- Cable needle
- Scissors, yarn needle, tape measure

### MEASUREMENTS

<b>To Fit Head</b> <i>(approx)</i>	cm	56
---------------------------------------	----	----

### TENSION

22 sts and 30 rows to 10cm over stocking, using 4mm needles.



## MARVEL DENIM EFFECTS 12 PLY COAT

**i** INTERMEDIATE

### WHAT YOU'LL NEED

- '4 Seasons' Marvel Denim Effects 12ply 100g x 10 (11-12-13) balls
- 1 pair each of 5.50mm and 4.50mm knitting needles or sizes required to give correct tension
- 3 buttons
- 3 small safety pins
- Scissors, yarn needle, tape measure

### MEASUREMENTS

Size		S	M	L	XL
<b>To fit bust</b>	cm	75/80	85/90	95/100	105/110
<b>Actual size</b> <i>(approx)</i>	cm	100	111	120	130
<b>Length</b> <i>(approx)</i>	cm	75	76	77	78
<b>Sleeve length</b> <i>(approx)</i>	cm	43	43	43	43

### TENSION

22 sts x 25 rows to 10cm over patt, using 5.50mm needles.

To work a 15cm x 15cm tension square, using 5.50mm needles cast on 34 sts.

Work 38 rows patt as for Back.  
Cast off.

If you have more sts to 10cm, use a larger size needle, if you have less sts to 10cm, use a smaller size needle.



## DAISY STRIPED JUMPER

**i** INTERMEDIATE

### WHAT YOU'LL NEED

- 'Moda Vera' Daisy 100g x 1 (1-2-2) balls M White (Main Colour), 1 (1-1-2) balls C1 Gold (1st contrast colour), 1 (1-1-2) balls C2 Blondy (2nd contrast colour), 1 (1-1-1) balls C3 Purple (3rd contrast colour)
- 1 pair each of 4.50mm, 5.00mm knitting needles or size required for correct tension
- Scissors, yarn needle, tape measure

### MEASUREMENTS

Size		S	M	M	XL
<b>To fit bust</b>	cm	75-80	85-90	95-100	105-110
<b>Actual size</b> <i>(approx)</i>	cm	106	116	126	136
<b>Length</b> <i>(approx)</i>	cm	56	57	58	59
<b>Sleeve length</b> <i>(approx)</i>	cm	43	44	45	46

### TENSION

19 sts x 27 rows to 10cm over stocking st, using 5.00mm needles.



## HARRIS 3/4 SLEEVE JACKET

**i** INTERMEDIATE

### WHAT YOU'LL NEED

- 'Moda Vera' Harris 100g x 6 (6-7-8) balls
- A pair of 6mm knitting needles or size required to give correct tension
- 2 stitch-holders
- 3 buttons
- Scissors, yarn needle, tape measure

MEASUREMENTS					
Size		S	M	L	XL
To fit bust	cm	75/80	85/90	95/100	105/110
Actual size	cm	95	105	115	125
Length (approx)	cm	55	56	57	58
Sleeve length	cm	34	34	34	34

### TENSION

15 sts x 22 rows to 10cm over stocking st, using 6mm needles.

To work a 15cm x 15cm tension square, using 6mm needles cast on 22 sts.

Work 34 rows stocking st. Cast off.

If you have more sts to 10cm, use a larger size needle, if you have less sts to 10cm, use a smaller size needle.



## BELLBIRD SHORT ROW SCARF

**i** INTERMEDIATE

### WHAT YOU'LL NEED

- 'Moda Vera' Bellbird Woolblend 100g x 2 balls
- A pair 4.50mm knitting needles or size required to give correct tension
- Scissors, yarn needle, tape measure

MEASUREMENTS		
Width (approx)	cm	20
Length (approx)	cm	192

### TENSION

17 sts to 10cm in width over garter st, using 4.50mm needles.



## WOOL TO BE WILD DIAGONAL SWEATER

**i** INTERMEDIATE

### WHAT YOU'LL NEED

- 'Abbey Road' Wool To Be Wild x 5 (5-6-6) 100g balls.
- 1 pair each of 6.50mm and 5.50mm knitting needles, or sizes required for correct tension
- A stitch-holder
- Scissors, yarn needle, tape measure

MEASUREMENTS					
Size		S	M	L	XL
Fits bust	cm	75/80	85/90	95/100	105/110
Actual size (approx)	cm	88	98	108	118
Length (approx)	cm	48	49	50	51
3/4 Sleeve length	cm	32	32	32	32

### TENSION

14 sts x 19 rows to 10cm over stocking st, using 6.50mm needles.



## HARRIS GAUNTLETS

**i** INTERMEDIATE

### WHAT YOU'LL NEED

- 'Moda Vera' Harris 100g x 1 ball
- 1 pair each 5.50mm and 6mm knitting needles or size required to give correct tension
- A cable needle
- Scissors, yarn needle, tape measure

### MEASUREMENTS

<b>To fit hand</b> <i>(approx, slightly stretched)</i>	cm	23
<b>Length</b> <i>(approx)</i>	cm	25

### TENSION

15 sts and 21 rows to 10cm over stocking st, using 6mm needles.



## THE WIND CRIES MERINO LADY'S CARDIGAN

**i** INTERMEDIATE

### WHAT YOU'LL NEED

- 'Abbey Road' The Wind Cries Merino 25g x 9 (10-11-12) balls
- 1 pair each 4.50mm and 3.75mm knitting needles or size required to give correct tension
- A stitch-holder
- 3 buttons
- Scissors, yarn needle, tape measure

### MEASUREMENTS

Size		S	M	L	XL
<b>To fit bust</b>	cm	75/80	85/90	95/100	105/110
<b>Actual size</b> <i>(approx)</i>	cm	95	105	115	125
<b>Length</b> <i>(approx)</i>	cm	52	53	54	55
<b>Sleeve length</b>	cm	45	45	45	45

### TENSION

21 sts x 30 rows to 10cm over stocking st, using 4.50mm needles.



## FLINDERS STRIPE OVERTOP

**i** INTERMEDIATE

### WHAT YOU'LL NEED

- '4 Seasons' Flinders Cotton 8ply 50g x 3 (3-4-4) balls 1st Colour (C1-Blush), 3 (4-4-5) balls 2nd Colour (C2-Terracotta), 2 (2-3-3) balls 3rd Colour (C3-Bark)
- 1 pair 4mm knitting needles or size required to give correct tension
- Scissors, yarn needle, tape measure

### MEASUREMENTS

Size		S	M	L	XL
<b>To fit bust</b>	cm	80/85	90/95	100/105	110/115
<b>Actual size</b> <i>(approx)</i>	cm	100	110	120	130
<b>Length</b> <i>(approx)</i>	cm	60	60	64	64
<b>Sleeve length</b> <i>(approx)</i>	cm	10	10	10	10

### TENSION

22 sts and 31 rows to 10cm over patt, using 4mm needles.



## FLINDERS VEST

**e** EASY

### WHAT YOU'LL NEED

- '4 Seasons' Flinders 50g x 3 (4-4-5) balls 1st Colour (C1); 2 (3-3-4) balls 2nd Colour (C2)
- 1 pair 4mm knitting needles or size required to give correct tension
- Scissors, yarn needle, tape measure

MEASUREMENTS				
Size		S	M	L
To fit bust	cm	80/85	90/95	100/105
Actual size (approx)	cm	90	100	110
Length (approx)	cm	50	52	55

### TENSION

22 sts and 33 rows to 10cm over patt, using 4mm needles.



## WOOL TO BE WILD INFINITY SCARF

**e** EASY

### WHAT YOU'LL NEED

- 'Abbey Road' Wool To Be Wild x 5 100g balls
- 1 pair 6mm knitting needles or size needed for correct tension
- Scissors, yarn needle, tape measure

MEASUREMENTS		
Width (approx)	cm	25
Circumference	cm	200

### TENSION

13 sts to 10cm over patt, using 6mm needles.



## ESSENCE CLASSIC CARDIGAN

**i** INTERMEDIATE

### WHAT YOU'LL NEED

- 'Keepsake' Essence 50g as per size x 8 (8/9/9) balls Main Colour (MC), 7 (7/8/8) balls Colour 1 (Col1)
- 1 pair 3.25mm knitting needles
- 1 pair 4.00mm knitting needles
- 7 Buttons
- Stitch holders
- Yarn needle

MEASUREMENTS					
Size		S	M	L	XL
To fit bust	cm	82	90	98	106
Actual size (approx)	cm	91	100	107	114
Length (approx)	cm	66	66	68	68
Sleeve length (approx)	cm	43	43	45	45

### TENSION

22 Stitches x 32 Rows to give 10cm Square in Stocking St using 4.00mm knitting needles.





## ORGANIC WOOL FAIR ISLE POLO JUMPER

**q** ADVANCED

### WHAT YOU'LL NEED

- 'Keepsake' Organic Wool 50g x 7 (8-9) balls Main Colour (M-cream), 4 (4-5) balls 1st Contrast Colour (C1-light bone), 1 ball 2nd Contrast (C2-dark brown).
- 1 pair each 4mm and 4.50mm knitting needles; one each 4mm (60cm) and 4.50mm (80cm) circular needles, or sizes required to give correct tension
- 4 stitch-holders
- Scissors, yarn needle, tape measure

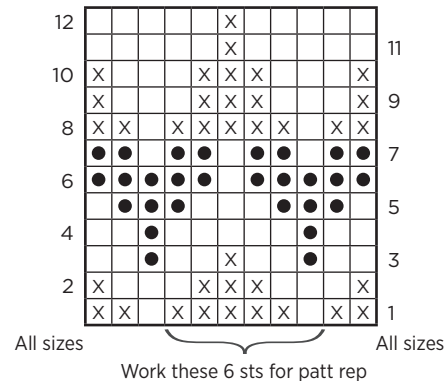
MEASUREMENTS				
Size		S	M	L
To fit bust	cm	80/85	90/95	100/105
Actual size (approx)	cm	97	107	117
Length (approx)	cm	53	54	55
Sleeve length	cm	43	43	43

### TENSION

20 sts and 24 rows to 10cm over stocking st, using 4.50mm needles.

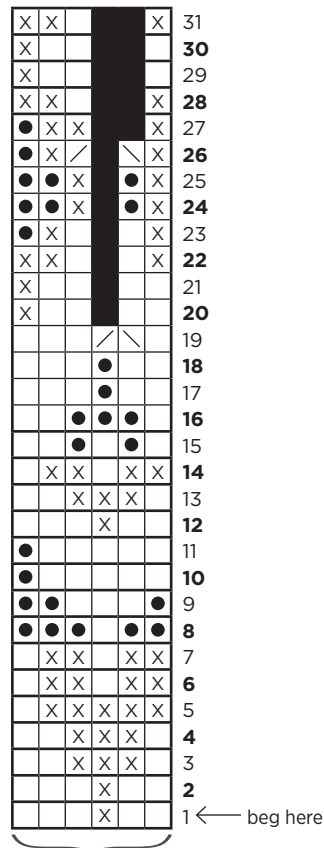
This garment has been worked on a looser tension than normally recommended.

### GRAPH A



**KEY**  
 □ = M  
 X = C1  
 ● = C2

### GRAPH B



**KEY**  
 □ = M  
 X = C1  
 ● = C2  
 ■ = no sts  
 ^ = dec one st



## SHADOW SHORT SLEEVE TOP

**i** INTERMEDIATE

### WHAT YOU'LL NEED

- 'Moda Vera' Shadow 100g x 3 (4-4-4) balls
- 1 pair each 3.75mm and 4.50mm knitting needles, a circular 4.50mm needle (60cm long) and a circular 3.75mm needle (40cm long), or sizes required to give correct tension
- 2 spare needles
- 2 stitch-holders
- A stitch marker
- Scissors, yarn needle, tape measure

MEASUREMENTS					
Size		S	M	L	XL
To fit bust	cm	75/80	85/90	95/100	105/110
Actual size (approx)	cm	90	100	110	120
Length (approx)	cm	53	54	55	56

### TENSION

20 sts x 27 rows to 10cm over stocking st, using 4.50mm needles



## KOOSH FLOOR RUG

**e** EASY

### WHAT YOU'LL NEED

- 'Moda Vera' Koosh Cotton Blend 100g x 3 balls Colour 1 (C1), 3 balls Colour 2 (C2), 3 balls Colour 3 (C3), 3 balls Colour 4 (C4)
- A 10mm crochet hook or size required to give correct tension
- Scissors, yarn needle, tape measure

MEASUREMENTS		
Width (approx)	cm	80
Length (approx)	cm	128

### TENSION

10 sts and 7 rows to 10cm over patt using 10mm hook and 2 strands of yarn tog.



## MONTANA VEST

**e** EASY

### WHAT YOU'LL NEED

- '4 Seasons' Montana 8ply 100g x 4 (4-5-5) balls
- 1 pair 4mm knitting needles; A 3.75mm circular needle (60cm) or sizes required to give correct tension
- 1 stitch-holder
- Scissors, yarn needle, tape measure

MEASUREMENTS					
Size		S	M	L	XL
To fit bust	cm	85	95	105	115
Actual size (approx)	cm	100	110	120	130
Length (approx)	cm	65	66	67	68

### TENSION

22 sts and 30 rows to 10cm over stocking st, using 4mm needles.



## PURE WOOL 8 PLY BEANIE

**e** EASY

### WHAT YOU'LL NEED

- '4 Seasons' Pure Wool 8Ply 50g x 2 balls
- 1 pair 4mm knitting needles or size required to give correct tension
- Scissors, yarn needle, tape measure

MEASUREMENTS		
To fit head (approx)	cm	56-58

### TENSION

22 sts and 30 rows to 10cm over stocking st, using 4mm needles.



## SPOT SAVER CHEVRON SCARF

**i** INTERMEDIATE

### WHAT YOU'LL NEED

- '4 Seasons' Spot Saver Prints 140g x 3 balls Main colour (M) tweed mix
- '4 Seasons' Marvel 8 ply 100g x 1 ball (C1) Hawthorn
- A pair of 6.00mm knitting needles or size required to give correct tension
- Scissors, yarn needle, tape measure

MEASUREMENTS		
Width (approx)	cm	30
Length (approx)	cm	160

### TENSION

16 sts x 21 rows to 10cm over patt, using 6.00mm needles.



## BELLBIRD CABLE SWEATER

**i** INTERMEDIATE

### WHAT YOU'LL NEED

- 'Moda Vera' Bellbird Woolblend 100g x 5 (6-6-7) balls
- 1 pair each of 4.50mm and 3.75mm knitting needles or sizes required to give correct tension
- A cable needle
- 2 stitch-holders
- Scissors, yarn needle, tape measure

MEASUREMENTS					
Size		S	M	L	XL
To fit bust	cm	75/80	85/90	95/100	105/110
Actual size (approx)	cm	101	109	122	134
Length (approx)	cm	58	59	60	61
Sleeve length	cm	43	43	43	43

### TENSION

19 sts x 22 rows to 10cm over Back patt, using 4.50mm needles.

To work a 15cm x 15cm tension square, using 4.50mm needles cast on 30 sts.

Work 34 rows patt as for Back. Cast off.

If you have more sts to 10cm, use a larger size needle, if you have less sts to 10cm, use a smaller size needle.



## STALLION STRIPED JUMPER

**a** ADVANCED

### WHAT YOU'LL NEED

- 'Semco' Stallion 8ply 100g x 3 (3-3-4) balls 1st Colour (C1) Black and 2 (2-3-3) balls 2nd Colour (C2) White
- A 4mm circular knitting needle 60cm long and a 4mm circular knitting needle 40cm long, 1 pair 3.25mm knitting needles or size required to give correct tension
- 4 stitch-holders
- Scissors, yarn needle, tape measure

MEASUREMENTS					
Size		S	M	L	XL
To fit bust	cm	75/80	85/90	95/100	105/110
Actual size	cm	99	110	119	130
Length (approx)	cm	56	57	58	59
Sleeve length	cm	43	43	43	43

### TENSION

22 sts x 30 rows to 10cm over stocking st, using 4mm needles.

To work a 15cm x 15cm tension square, using 4mm needles cast on 33 sts.

Work 40 rows stocking st. Cast off.

If you have more sts to 10cm, use a larger size needle, if you have less sts to 10cm, use a smaller size needle.



## GLORY GLORY WRAP TOP

**i** INTERMEDIATE

### WHAT YOU'LL NEED

- 'Abbey Road' Glory Glory 200g x 2 (2-3-3) balls
- 1 pair each 4mm (UK 8) and 5mm (UK 6) knitting needles and a pair of 4mm double-pointed knitting needles, or sizes required for correct tension
- 2 safety pins
- Scissors, yarn needle, tape measure

### MEASUREMENTS

Size		S	M	L	XL
To fit bust	cm	75-80	85-90	95-100	105-110
Actual size (approx)	cm	99	110	119	130
Length (approx)	cm	57	58	59	60
Sleeve length (approx)	cm	15	15	15	15

### TENSION

18 sts x 24 rows to 10cm over stocking st, using 5mm needles.



## FLINDERS LOOSE TOP WITH POCKETS

**i** INTERMEDIATE

### WHAT YOU'LL NEED

- '4 Seasons' Flinders Cotton 8ply 50g x 3 (3-4-4) balls 1st Colour (C1-dark bottle), 2 (2-3-3) balls 2nd Colour (C2-avocado), 2 (2-3-3) balls 3rd Colour (C3-amethyst), 2 (2-3-3) balls 4th Colour (claret)
- 1 pair 4mm knitting needles or size required to give correct tension
- 2 stitch-holders
- Scissors, yarn needle, tape measure

### MEASUREMENTS

Size		S	M	L	XL
To fit bust	cm	80/85	90/95	100/105	110/115
Actual size (approx)	cm	100	110	120	130
Length to shoulder (approx)	cm	64	64	66	66
Sleeve length (approx)	cm	45	45	45	45

### TENSION

21 sts and 29 rows to 10cm over stocking st, using 4mm needles.



## GLORY GLORY SCARF

**e** EASY

### WHAT YOU'LL NEED

- 'Abbey Road' Glory Glory 200g x 1 ball each of 3 Colours 1st Colour (C1-navy); 2nd Colour (C2-cream) and 3rd Colour (C3-aqua)
- A pair 5mm knitting needles or size required to give correct tension
- Scissors, yarn needle, tape measure

### MEASUREMENTS

Width (approx)	cm	35
Length (approx)	cm	198

### TENSION

18 sts and 24 rows to 10cm over stocking st, using 5mm needles.



### MONKEY DIAGONAL SCARF

**e** EASY

#### WHAT YOU'LL NEED

- 'Moda Vera' Monkey 100g x 1 ball 1st Colour (C1-sage), 1 ball 2nd Colour (C2-mushroom), 1 ball 3rd Colour (C3-dusty)
- 1 pair 9mm knitting needles or size required to give correct tension
- Scissors, yarn needle, tape measure

MEASUREMENTS		
Width (approx)	cm	20
Length (approx)	cm	150

#### TENSION

8 sts to 10cm in width over garter, using 9mm needles.



### BRIGHTON LACEY SCARF

**i** INTERMEDIATE

#### WHAT YOU'LL NEED

- '4 Seasons' Brighton Cotton Blend 50g x 3 balls Colour 1 (C1), 3 balls Colour 2 (C2)
- A 4mm crochet hook or size required to give correct tension
- Scissors, yarn needle, tape measure

MEASUREMENTS		
Width (approx)	cm	16
Length (approx)	cm	227

#### TENSION

10 sts and 5 rows to 5cm over patt using 4mm hook.



### SHADOW SCARF

**i** INTERMEDIATE

#### WHAT YOU'LL NEED

- 'Moda Vera' Shadow 100g x 2 balls 1st Colour (C1-yellow print), 2 balls 2nd Colour (C2-green print)
- A pair 5mm knitting needles or size required to give correct tension
- Scissors, yarn needle, tape measure

MEASUREMENTS		
Width (approx)	cm	30
Length (approx)	cm	251

#### TENSION

16 sts to 10cm in width over garter st, using 5mm needles.

This scarf has been worked on bigger needles than normally recommended.



## FREEDOM CROCHET BAG

**e** EASY

### WHAT YOU'LL NEED

- 'Abbey Road' Freedom 100g 4 balls
- 3.50 mm crochet hook
- Scissors and wool needle

MEASUREMENTS		
<b>Base width</b> <i>(approx)</i>	cm	30
<b>Length</b> <i>(approx, excluding handles)</i>	cm	40

### TENSION

First 4 rnds measure approx 10cm square



## DAISY WRAP

**e** EASY

### WHAT YOU'LL NEED

- 'Moda Vera' Daisy 100g x 1 ball M (navy), 1 ball C1 (Sky), 1 ball C2 (Blondy), 1 ball C3 (Smoke), 1 ball C4 (White)
- A circular 6.00mm knitting needles or size needed for correct tension
- Scissors, yarn needle, tape measure

MEASUREMENTS		
<b>Width</b> <i>(approx)</i>	cm	140
<b>Length</b> <i>(approx)</i>	cm	100

### TENSION

16 sts x 28 rows to 10cm over garter st, using 6.00mm needles.



## MONKEY PATCHWORK TRIANGLE THROW

**i** INTERMEDIATE

### WHAT YOU'LL NEED

- 'Moda Vera' Monkey 100g x 2 balls 1st colour (C1) Black, 2 balls 2nd Colour (C2) Teal, 2 balls 3rd Colour (C3) Grey, 2 balls 4th Colour (C4) Lime, 2 balls 5th Colour (C5) Navy, 2 balls 6th Colour (C6) White and 2 balls 7th Colour (C7) Orange
- 1 pair 9mm knitting needles, or size required for correct tension
- Scissors, yarn needle, tape measure

MEASUREMENTS		
<b>Width</b> <i>(approx)</i>	cm	90
<b>Length</b> <i>(approx)</i>	cm	120

### TENSION

9.5 sts x 19 rows to 10cm over garter st, using 9mm needles.

