



LPO Yuendumu via
ALICE SPRINGS, NT, 0872
Australia
Phone: +61 8 8956 4133
Fax:
E: info@warlu.com
www.warlu.com



Artist Geraldine Napurrurla Langdon

Catalogue # 4480/19

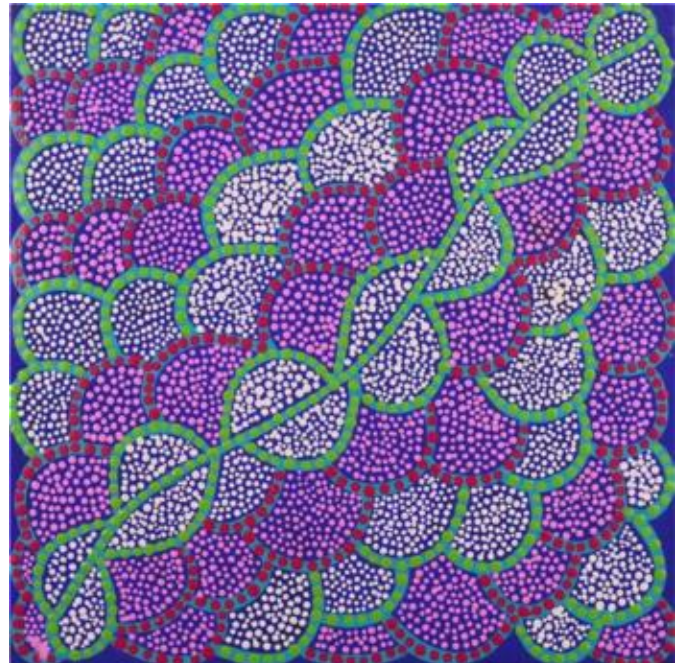
Skin Name Napurrurla

Canvas Size 30 x 30 cm prestretched

Jukurrpa Ngurlu Jukurrpa (Native Seed Dreaming)

Story

Nakamarra/Napurrurla women and Jakamarra/Jupurrurla men. The Jukurrpa is associated with a place called Jaralypari, north of Yuendumu. Lukarrara is a species of Fimbristylis, a grass that bears edible seeds in the winter-time. The seeds are traditionally ground on a large stone ('puturlu') with a smaller stone ('ngalikirri') to make flour. This flour is mixed with water ('ngapa') to make small seed cakes. In contemporary Warlpiri paintings traditional iconography is used to represent the Jukurrpa, particular sites and other elements. In paintings of this Jukurrpa large concentric circles are used to represent Jaralypari and dots surrounding these circles are often depicting the 'ngurlu'.



Authenticated By:

Coalby

Date: 6/9/2021

Copyright of all artworks and text remains with the artists and Aboriginal traditional owners and is administered on their behalf by Warlukurlangu Artists Aboriginal Corporation.
ICN #: 457

