

SPOTLIGHT

COUCH BUDDIES

Nº 05.22.28
PROJECT SHEET



It's what you make it.

**SHOW US WHAT
YOU'RE MAKING**

 /spotlightstores

 @spotlightstores

COUCH BUDDIES

i INTERMEDIATE

WHAT YOU'LL NEED

- Quick unpick
- Pearl head pins/pin cushion or pin container
- 0.5m black felt
- 1m dark brown felt
- 1m light brown/beige felt
- 0.5m dark grey felt
- 1m light grey 3mm felt
- Light pink felt sheet
- Basting spray
- Fabric scissors
- Hobby fill or stuffing fibre
- Clean newsprint or butchers paper to protect surface when you're using spray
- Mask for use with spray
- Scissors
- Tailors' chalk/fabric pencil
- Press studs
- Sewing machine
- Water dissolving pen
- Sewing thread in black, grey, brown & pink
- Wadding/stuffing
- Lint roller
- Bobbins
- Birch braided elastic approx. 10mm
- Pinking shears
- Loop turner or safety pin
- Thread snips
- Velcro dots/snap fasteners

INSTRUCTIONS

Laying out patterns

Step 1 - Print the paper patterns on A3 paper and cut out.

Tip - mark each animal with a colour to help you keep track eg: Koala Blue, Wombat Red & Platypus Green.

Step 2 - Lay felt fabric onto a flat work surface.

Step 3 - Pin pattern to fabric using pearl head pins, following cutting instructions. Note the number of pieces you need of each colour.

Step 4 - Cut out the pieces using fabric scissors. Use pinking shears for the pieces that are marked with a zigzag edge.

Create the face

Step 1 - Lay out placement of the facial features eg: nose/bill & cheeks etc. Mark placement with fabric marking pen, using the pattern as guide.

Step 2 - Lay out a piece of clean newsprint or butcher's paper to work on and attach the nose/cheeks using the basting spray, pin in place if required. When using the spray, ensure you work outdoors or in a well ventilated area and wear a mask. This step is optional, but it is easier than using pins as the basting spray acts as a light fabric glue to hold your work

Step 3 - Set your sewing machine to a zig zag stitch - test on a piece of scrap first. Once happy, use pink for the edges of the cheeks and black thread for the nose, nostrils, eyes, and mouth. Stitch around the features to get an applique look.

Tip - It can help to have a notebook handy to write down the settings, you can attach the test piece too. Then you can have a library of the stitches you like as a reference for future sewing projects.

Note - When using the zig zag stitch to applique, set your zig zag more open to begin with and sew around shape to help

hold the piece in place. On the next pass, set the zig zag tighter to get a satiny looking finish.

Step 4 - (for platypus only). Sew the curved edge top bill to the bottom bill, stuff lightly & stitch closed. Use pins to hold in place and plain stitch to attach to the face. Then zig zag applique to finish and stitch over the line that joins the top & bottom bill, so it is attached to the face with the bill hanging loose.

Paws/ears/tail (depending on animal)

Step 1 - Sew paws and ears, allowing a 1cm seam allowance from the outside edge. As you are using felt, you are not required to turn anything inside out. The finished sides are on the outside.

Step 2 - Stuff lightly and edge stitch to close. This stitch will be hidden when they're attached to the cushion so stitch about the width of one side of a sewing machine foot as a guide.

Step 3 - (for platypus only). Sew tail on a curved edge and stuff lightly. Attach to the back pattern piece as marked using pins and zig zag applique to finish and attach to the body.

Tip - Pin the tail up against the body when you're finished this step it will keep it out of the way while you finish the cushion.

Pocket

Step 1 - Turn over the pocket allowance and pin into place.

Step 2 - Sew two 2cm rows of stitching using machine marks as a guide.

Tip - For the second row of stitching, follow the first stitch line & use the foot of the machine as a guide for the width to get an even row of stitching.

Step 3 - Feed the loop turner into the felt channel you have sewn and use the small hook to catch the elastic to pull through.

Step 4 - Pin the elastic on each side making sure it is not twisted. Trim off the excess and

stitch down with the machine.

Note - the elastic is not meant to be tight or pull on the channel. It should only be the length of the pocket. This will hold the head of the couch buddy in position when it is tucked up.

Body

Step 1 - On a work surface, lay out the front and back body pieces, and the pocket. Pin everything in position, sandwiching all layers. This is with the face of the fabrics facing out, so it is the finished side you are looking at.

Step 2 - Place paws & ears in position. Use the pattern as a rough guide or place by eye. Sandwich the paws & ears in position with pins, and pin the front and back pieces together in between.

Step 3 - Sew layers together, leaving an opening for stuffing as marked on the pattern.

Stuffing

Step 1 - Using the opening, stuff your couch buddy with the fibre fill, being careful not to over stuff as it will distort the shape.

Step 2 - Pin the opening shut, then use the sewing machine to stitch closed.

Attaching press studs or Velcro

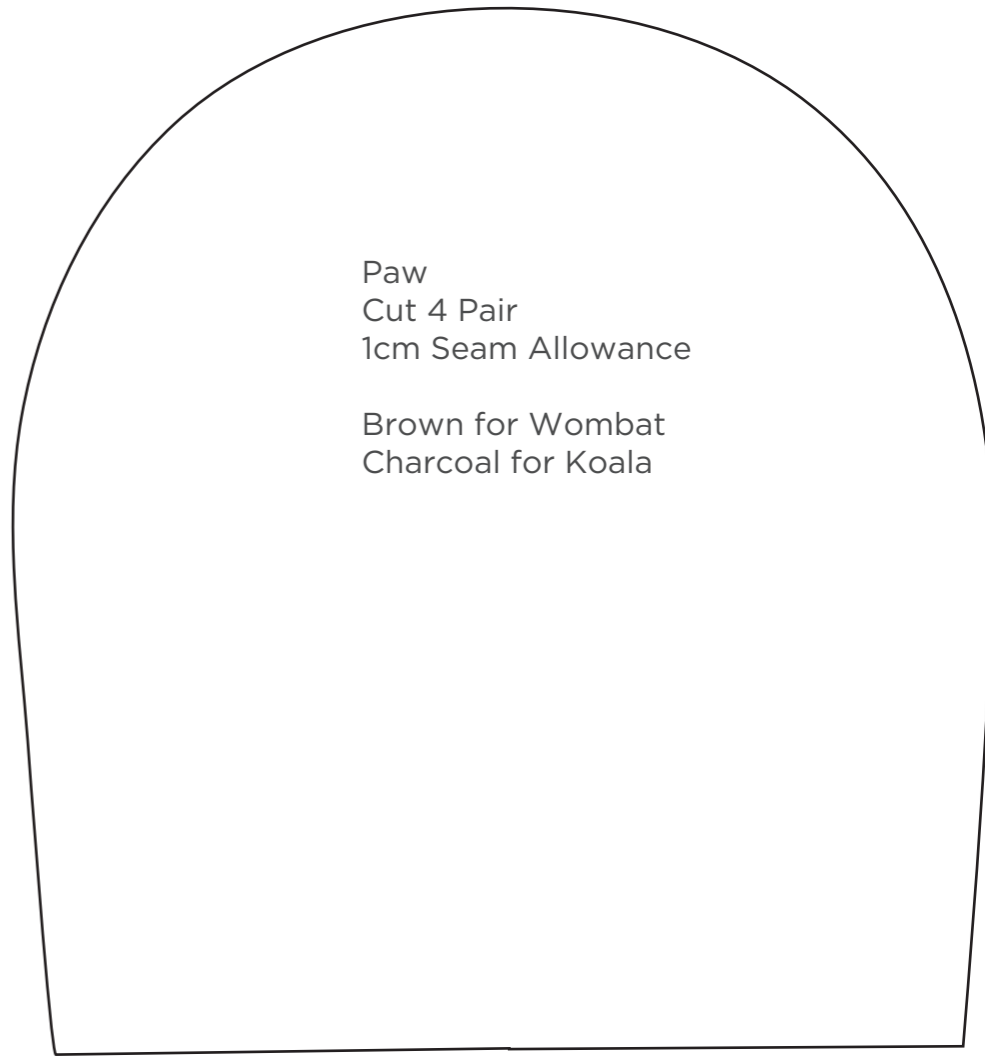
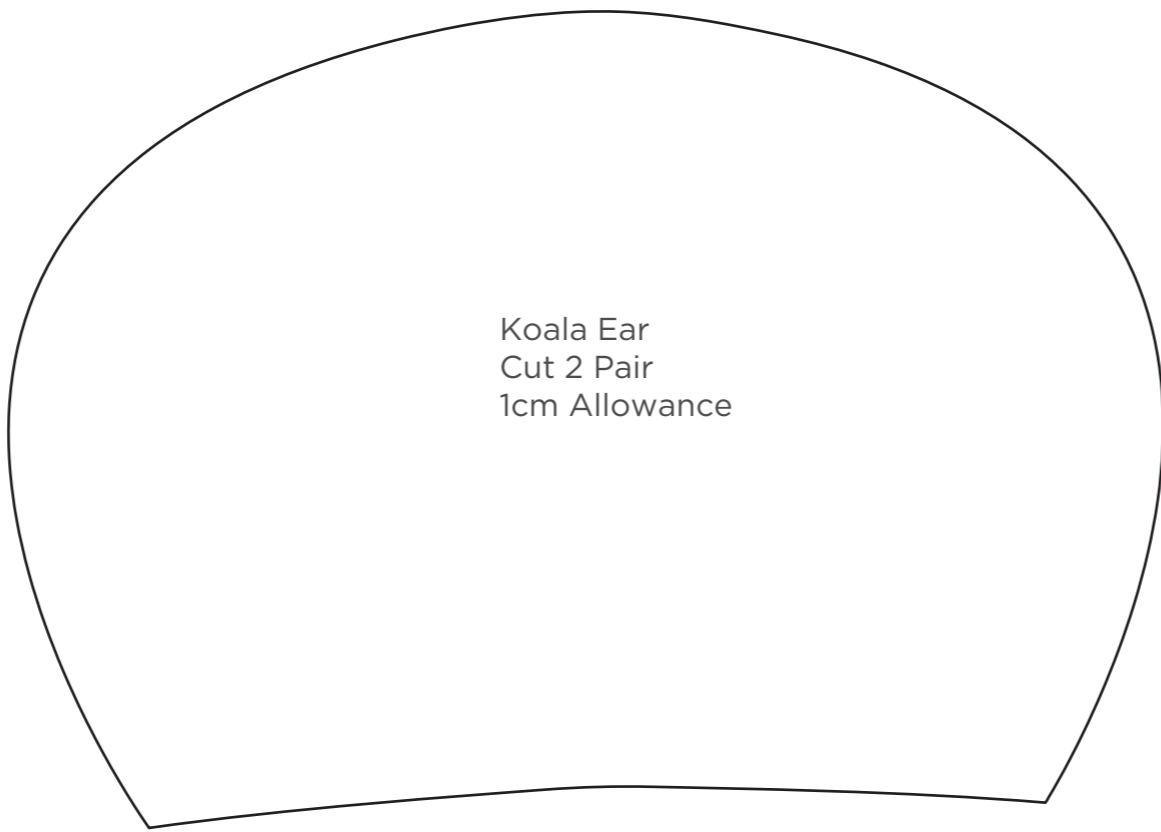
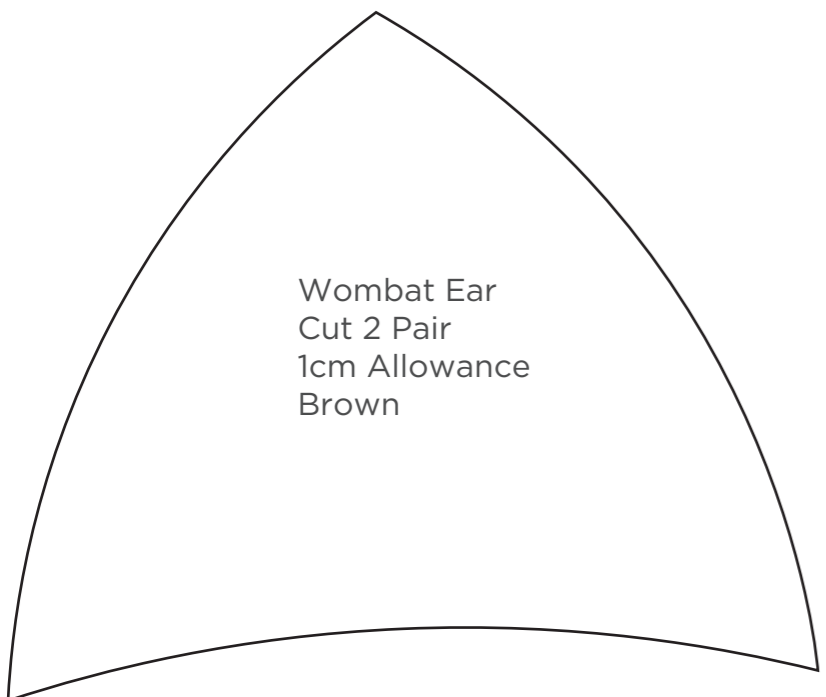
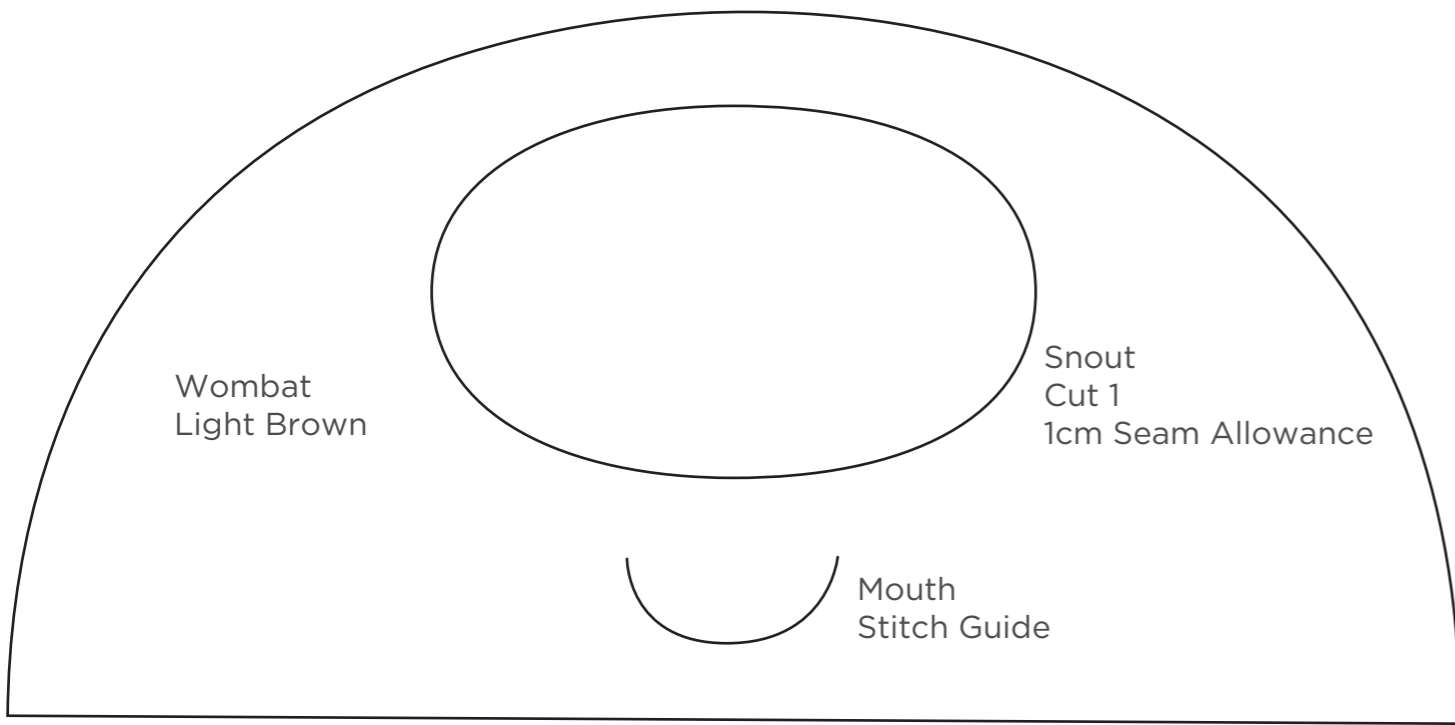
Step 1. On each of the paw's hand, sew a press stud/snap fastener. Note that the fasteners have two parts.

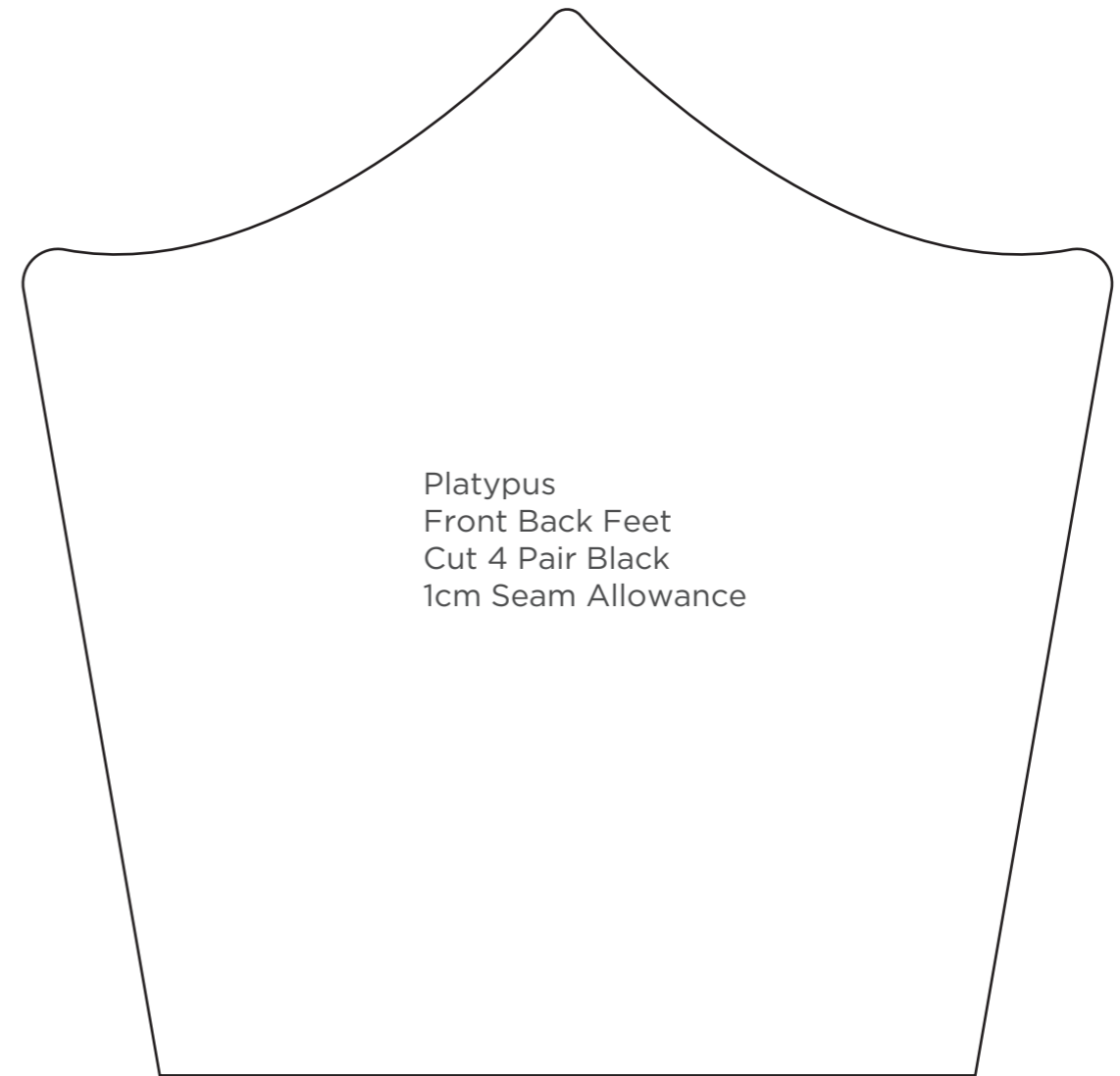
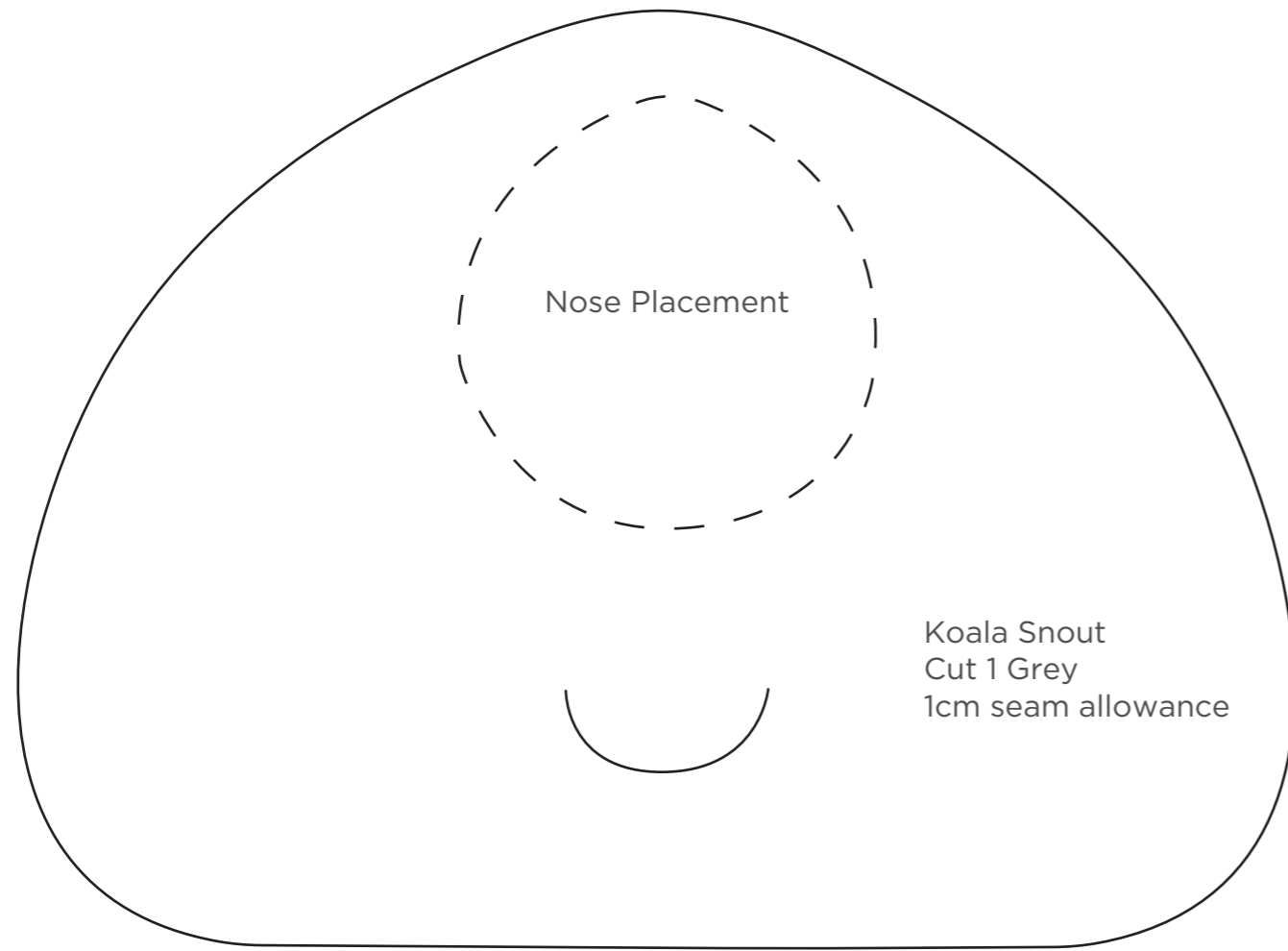
Step 2 - On the corresponding point of the body, mark and hand sew the matching fastener part. Attaching these fasteners will allow you to fold up your couch buddy like a cushion. Simply tuck the head into the pocket and use the fasteners to hold the paws closed.

Tip - If you're worried about choking hazards, use Velcro dots. These are self adhesive, however it is helpful to secure them with extra stitches as prolonged use can cause them to fall off over time.

Step 3 - Trim any loose threads. Use a damp cloth to erase any chalk or fabric marker.

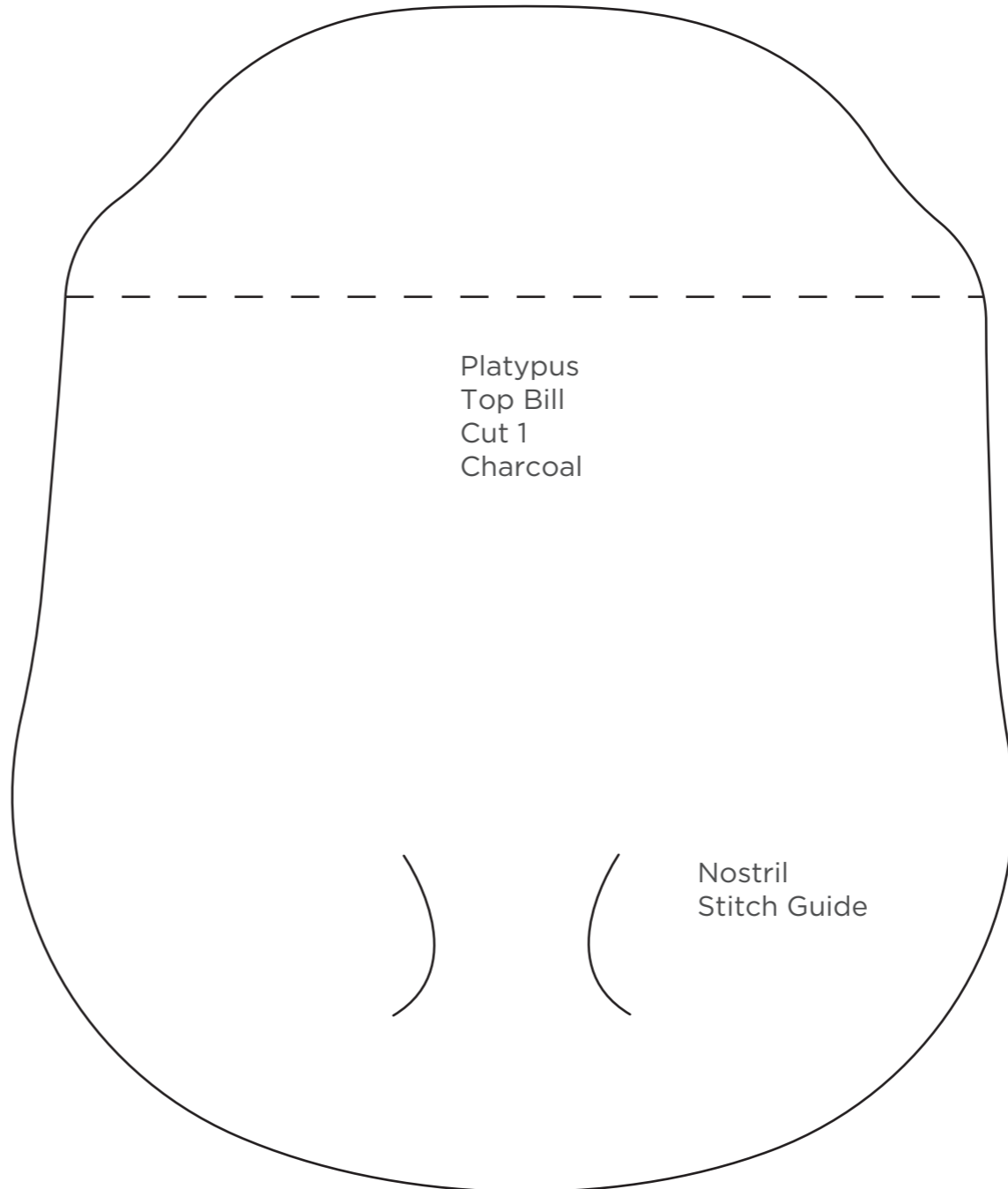
Step 4 - Grab your buddy & settle down for couch time!





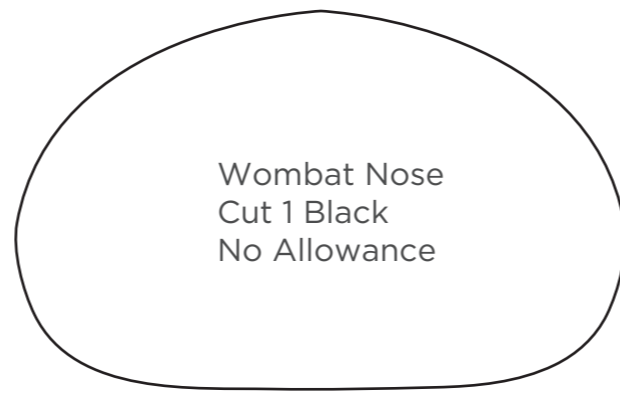


Platypus Tail
Cut 1 Pair Charcoal
1cm Seam Allowance

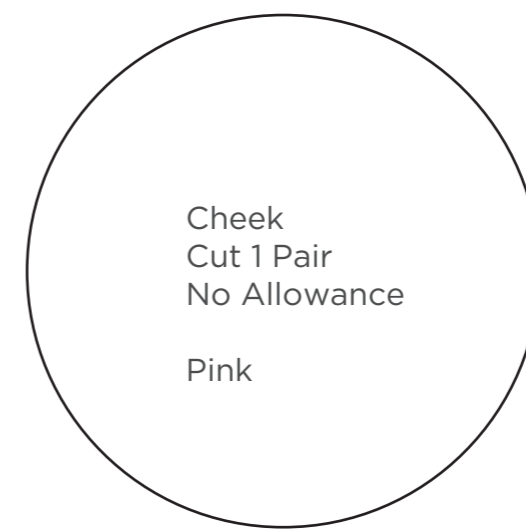


Platypus
Top Bill
Cut 1
Charcoal

Nostril
Stitch Guide

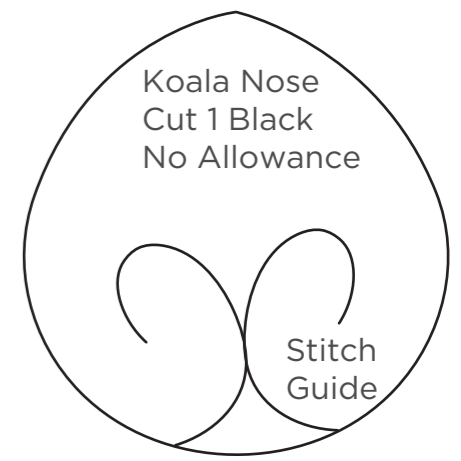


Wombat Nose
Cut 1 Black
No Allowance



Cheek
Cut 1 Pair
No Allowance

Pink



Koala Nose
Cut 1 Black
No Allowance

Stitch
Guide

Note - This template has been scaled. You will need to print this template at actual size and blow it up by 200% to make it full size.

